



**BULLARD  
BOLLARDS**  
Think Bollard Think Bullard

# BUNNY RISE 1000 (INGROUND LUMINAIRES)





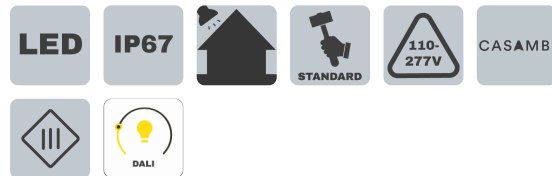
**BULLARD  
BOLLARDS**  
Think Bullard Think Bullard

**CODE:**  
**BB-001532.FAXA-GH**

FIXTURE TYPE: \_\_\_\_\_

PROJECT NAME: \_\_\_\_\_

NOTES:



#### GENERAL INFORMATION:

The Bunny Rise 1000 is a sleek, linear inground LED luminaire engineered for seamless architectural integration and powerful, uniform illumination. Featuring a robust extruded aluminum EN AW-6060 T5 housing with high resistance to oxidation and an 8 mm tempered glass diffuser, it delivers long-lasting durability and reliable outdoor performance with an IP67 rating. Its wide 145° × 152° light distribution and fixed optics provide smooth wall-washing and pathway lighting effects, making it ideal for façades, landscapes, and contemporary exterior applications. Available in 3000K or 4000K with multiple dimming options (Non-dimmable, 0–10V, Casambi, DALI) and remote driver configuration, the Bunny Rise 1000 combines high visual comfort, shock resistance, and minimalist design, backed by a 5-year warranty.

#### LIGHTING:

LED

LED

#### VOLTAGE:

110-277V



#### GASKETS:

Silicone gaskets

#### FIXTURE TYPE:

Inground Luminaires

#### MATERIAL:

Extruded aluminum EN AW-6060 T5 high resistance to oxidation

#### DIFFUSER MATERIAL:

Tempered glass 8mm

#### IP RATING:

IP 67

IP67

#### APPLINCE CLASS:

|||

#### OPERATION RANGE:

24 V DC

**THINK BOLLARD - THINK BULLARD**

[sales@gordonbullard.com](mailto:sales@gordonbullard.com)

[www.bullardbollards.com](http://www.bullardbollards.com)

1-877-964-4646



991 South Gull Lake Dr

Richland, MI 49083

USA



**BULLARD  
BOLLARDS**  
Think Bullard Think Bullard

**CODE:**  
**BB-001532.FAXA-GH**

FIXTURE TYPE: \_\_\_\_\_

PROJECT NAME: \_\_\_\_\_

NOTES:



#### DRIVER POSITION:

Remote

#### CRI:

>90

#### CABLE ENTRY / CABLE TYPE:

Cable gland PE-LD 5.2mm / FR5FOEM7-AD8 2x0.5mm<sup>2</sup>

#### CORD LENGTH:

0.5m

#### LIGHT DISTRIBUTION:

145° x 152°

#### BEAM DIRECTIONABILITY:

Fixed optics

#### OPTICS:

Anti UV technopolymer lens

#### WARRANTY:

LED lighting products are warranted for 5 years.

#### MAIN FEATURES:

High visual comfort  
Wide range of finishes  
Functional design  
Minimal design  
Shock resistant  
Operating Temperature: -22°F~122°F

#### FINISH OPTIONS:

Glass

**THINK BOLLARD - THINK BULLARD**

sales@gordonbullard.com  
www.bullardbollards.com  
1-877-964-4646



991 South Gull Lake Dr  
Richland, MI 49083  
USA

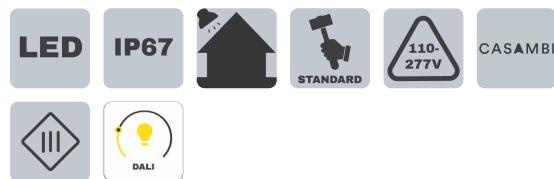
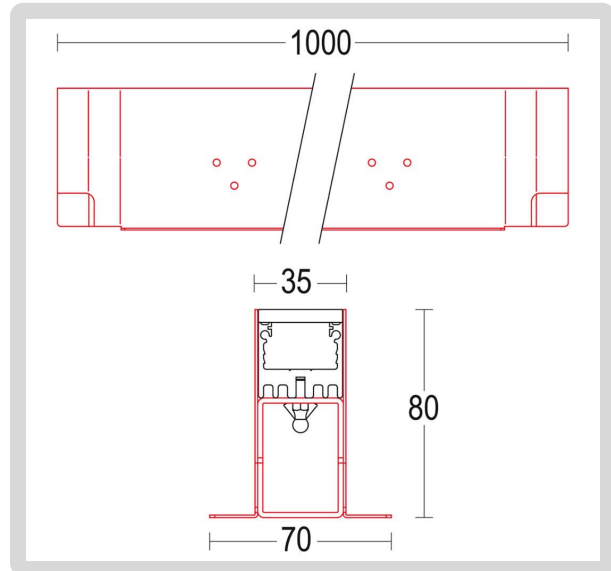


**BULLARD  
BOLLARDS**  
Think Bullard Think Bullard

**CODE:  
BB-001532.FAXA-GH**

FIXTURE TYPE: \_\_\_\_\_

PROJECT NAME: \_\_\_\_\_



## HOW TO ORDER:

CODE:

Example:  
CODE: BB-001532.FAXA-GH-L1-DIM-AC279

BB-001532.FAXA-  
GH-L1-DIM-  
AC279

### 1 MODELS:

- A) Recessed depth - P: 3.15" (8 cm)  
B) Length - L: 39.37" (100 cm)  
C) Width - W: 1.38" (3.5 cm)  
D) Cutout width - CW: 2.76" (7 cm)

### 2 BEAM ANGLE:

145° x 152°

### 3 LIGHT SOURCE:

- L1 LED | 1 x 14.5W | 3000K | 1 x 1730 lm | 110-277V  
-L2 LED | 1 x 14.5W | 4000K | 1 x 1903 lm | 110-277V

### 4 DIMMING OPTIONS:

- NON NON-Dimmable  
-DIM 0-10V  
-CAS Casambi  
-DAL Dali

### 5 ACCESSORIES:

-AC163

Power connector



-AC550

Joint plate Traccia



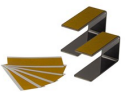
-AC279

IP 68 connector for through wiring 4P



-AC551

Extraction tool Traccia



-AC164

Connector end cap



-AC562

Rough-in housing end cup for concreting Traccia



-AC532

Rough-in housing Traccia 1000 – Ground



**THINK BOLLARD - THINK BULLARD**

sales@gordonbullard.com

www.bullardbollards.com

1-877-964-4646



991 South Gull Lake Dr

Richland, MI 49083

USA