

Light efficiency:

67 Lumen/Watt

Light quality:

CRI: 80.7

Color temperature:

2116 K

Output: 580 lm

Peak: 199 cd

Power: 8.7 W

PF: 1.0



Tracking number: [n/a](#)

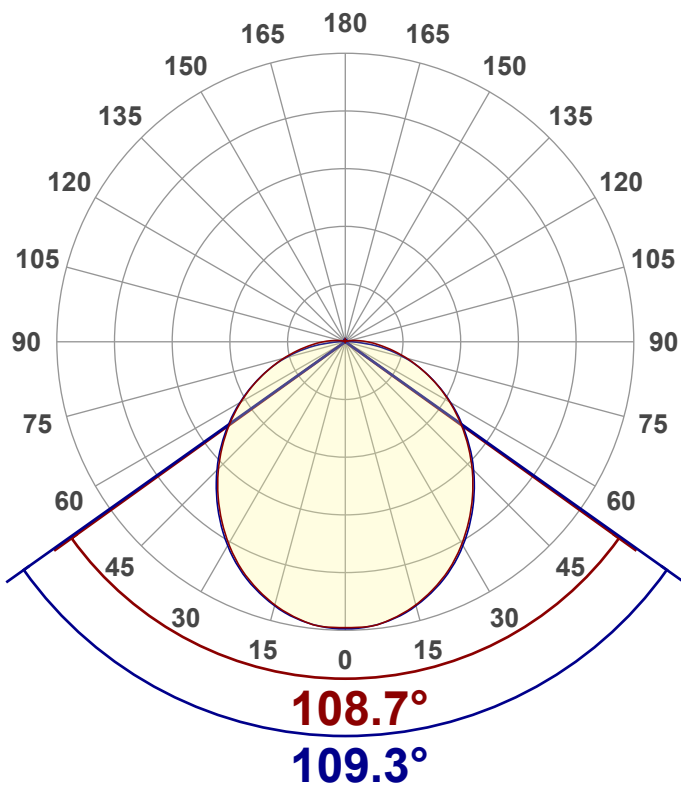
Product name:
NLAD5.322E

Item number:

Date and time:
10/16/2025 2:48:03 PM

Operator:
MW

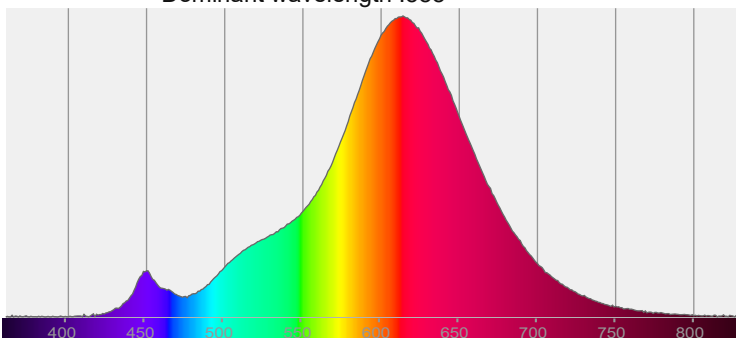
Description:
**color:2200K,
Power:17.28w/m,voltage:24V,length
:0.5m**



CIE 1931
x: 0.514
y: 0.414

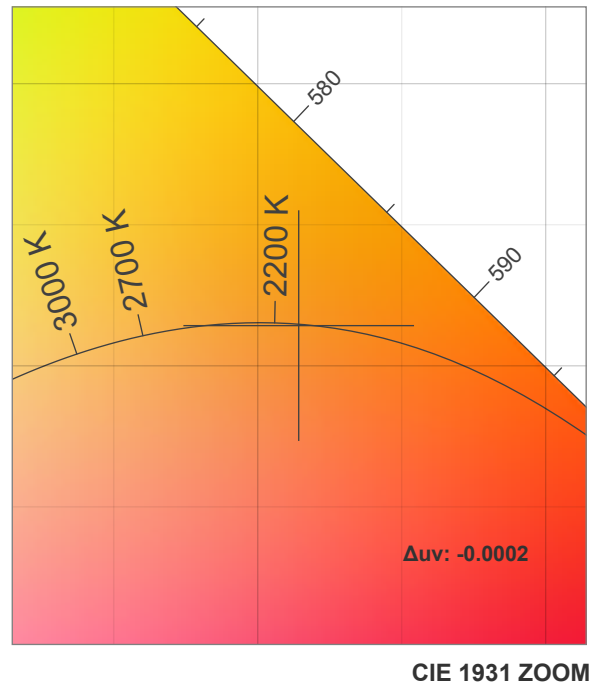
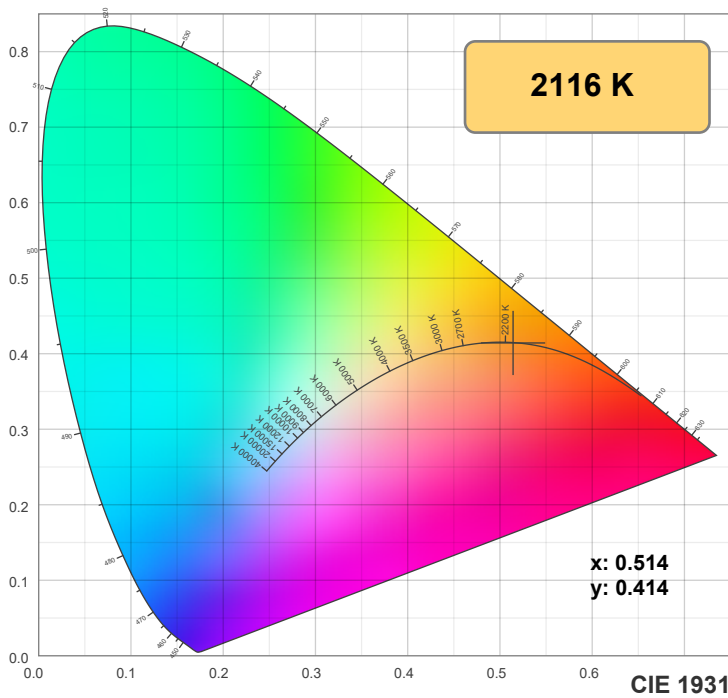
Spectra: Peak wavelength :614

Dominant wavelength :588

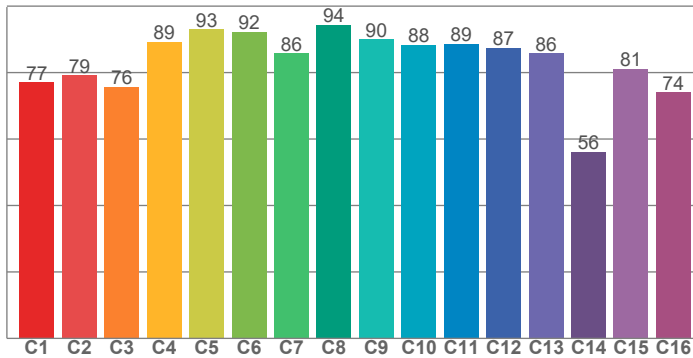


Power

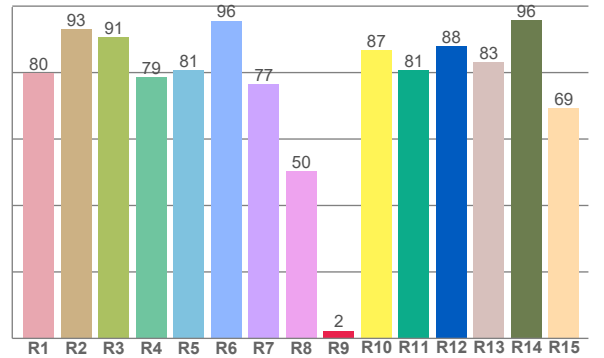
Voltage: 24.0 V
Current: 0.362 A
Frequency: 0 Hz



TM-30: 84.4



CRI: 80.7 (R1-R8)



CRI R values, only R1-R8 are used to calculate final CRI value

R1	R2	R3	R4	R5	R6	R7	R8	R9	R10	R11	R12	R13	R14	R15
79.8	93.1	90.7	78.6	80.7	95.6	76.6	50.4	2.3	86.6	80.8	87.9	83.0	95.7	69.4

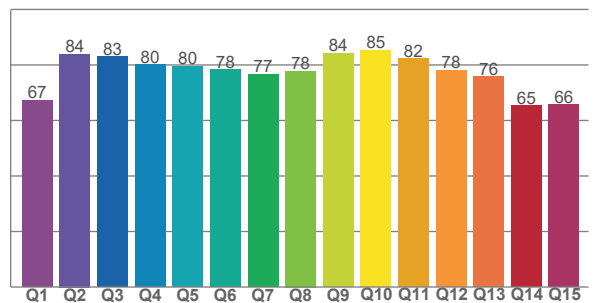
TM30 C values, 16 binned values out of total of 99 C values

C1	C2	C3	C4	C5	C6	C7	C8	C9	C10	C11	C12	C13	C14	C15	C16
77.1	79.2	75.7	89.2	93.0	92.2	85.7	94.3	89.9	88.4	88.6	87.4	85.8	56.1	81.2	74.1

CQS Q values

Q1	Q2	Q3	Q4	Q5	Q6	Q7	Q8	Q9	Q10	Q11	Q12	Q13	Q14	Q15
67.3	83.9	83.1	80.1	79.6	78.4	76.7	77.8	84.3	85.3	82.3	78.1	75.9	65.4	65.7

CQS: 76.1



Color parameters

Color temperature	Color rendering index	Red component	Color fidelity	Color gamut	Color quality scale	Color coordinate cie 1931	Color coordinate cie 1931	Color coordinate	Color coordinate	Color deviation from black body
CCT	CRI	CRI R9	TM30 Rf	TM30 Rg	CQS	x	y	u	v	Δuv
2116 K	80.7	2.3	84.4	96.3	76.1	0.514	0.414	0.296	0.358	-0.0002

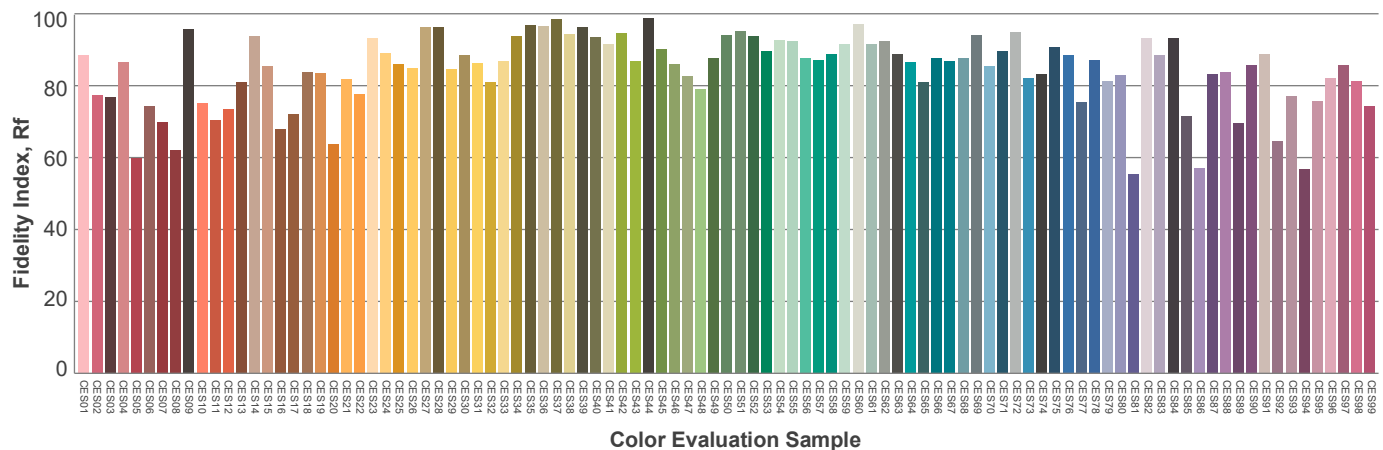
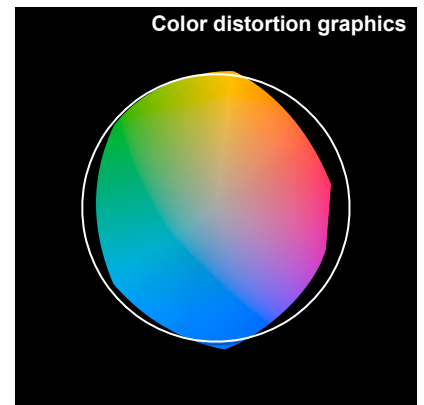
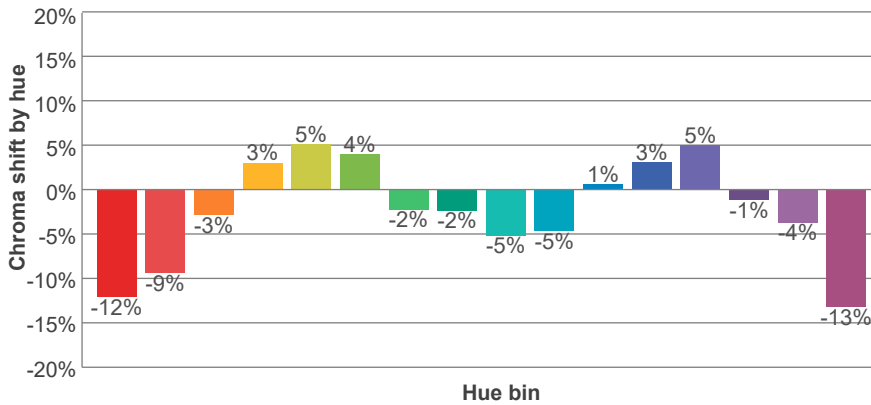
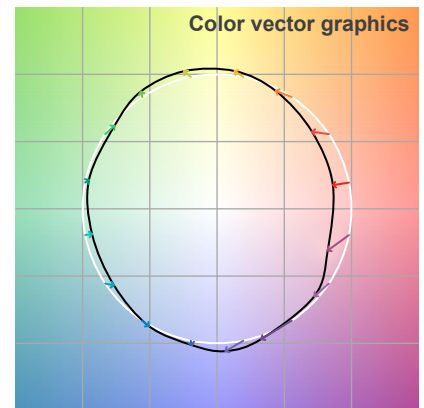
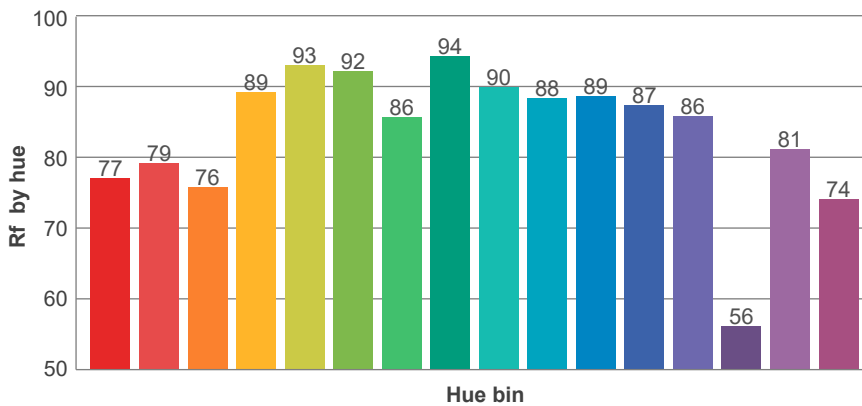
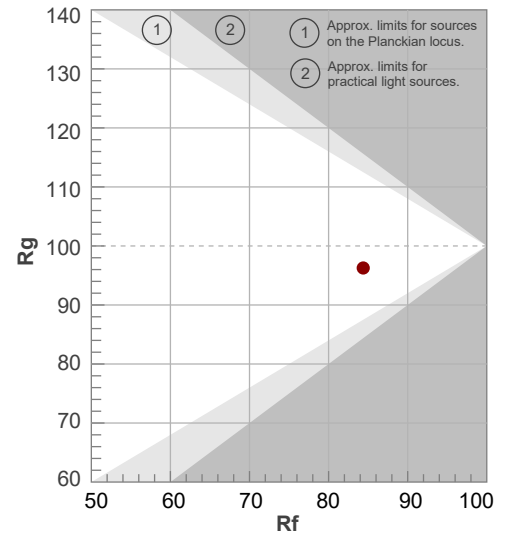
Rf 84.4

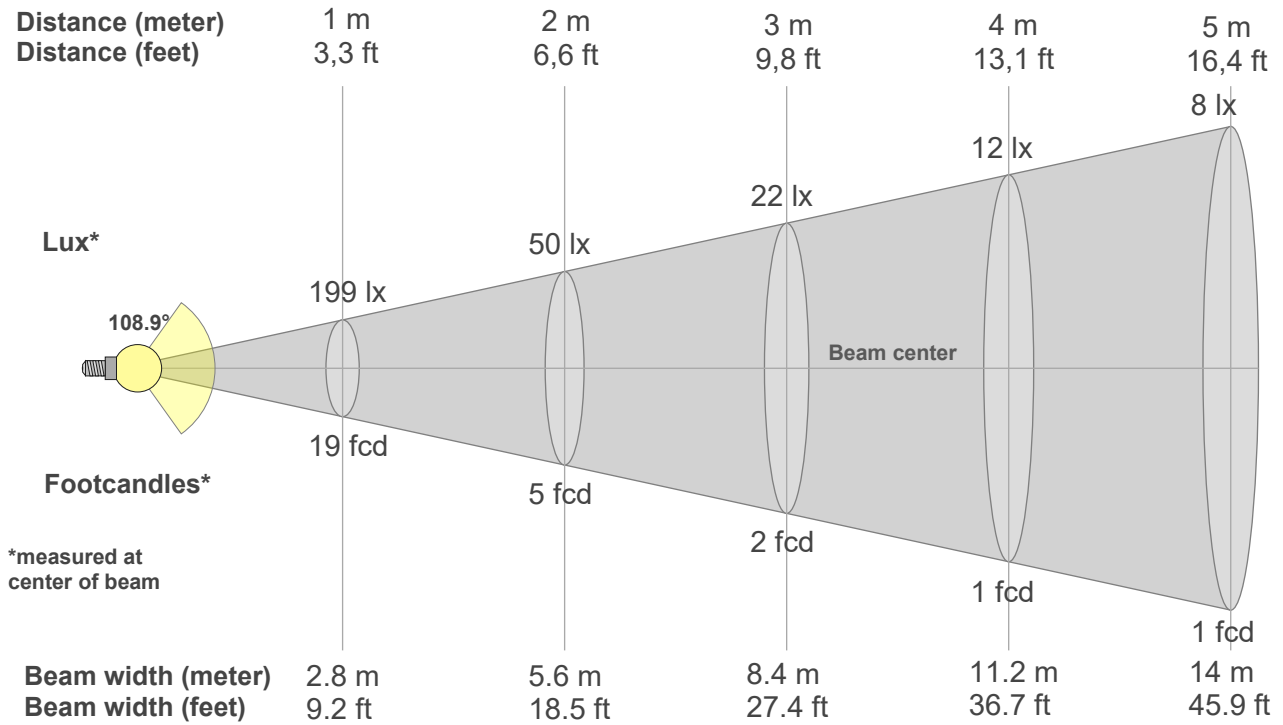
Fidelity index Rf

Rg 96.3

Gamut index Rg

Hue Bin	R _f	Shifts (%)	
		Chroma	Hue
1	77	-12%	0%
2	79	-9%	8%
3	76	-3%	12%
4	89	3%	7%
5	93	5%	4%
6	92	4%	-1%
7	86	-2%	-9%
8	94	-2%	-2%
9	90	-5%	0%
10	88	-5%	5%
11	89	1%	6%
12	87	3%	2%
13	86	5%	-14%
14	56	-1%	-26%
15	81	-4%	-14%
16	74	-13%	-14%





Beam intensities from 1-20m

1m	2m	3m	4m	5m	6m	7m	8m	9m	10m	11m	12m	13m	14m	15m	16m	17m	18m	19m	20m
3.3ft	6.6ft	9.8ft	13.1ft	16.4ft	19.7ft	23ft	26.2ft	29.5ft	32.8ft	36.1ft	39.4ft	42.7ft	45.9ft	49.2ft	52.5ft	55.8ft	59.1ft	62.3ft	65.6ft
199lx	50lx	22lx	12lx	8lx	6lx	4lx	3lx	2lx	2lx	2lx	1lx	1lx	1lx	1lx	1lx	1lx	1lx	1lx	0lx
18.5fcd	4.6fcd	2.1fcd	1.2fcd	0.7fcd	0.5fcd	0.4fcd	0.3fcd	0.2fcd	0.2fcd	0.2fcd	0.1fcd	0.1fcd	0.1fcd	0.1fcd	0.1fcd	0.1fcd	0.1fcd	0.1fcd	0fcd

Intensities in 0° c-plane

0°	5°	10°	15°	20°	25°	30°	35°	40°	45°	50°	55°	60°	65°	70°	75°	80°	85°	90°	95°
199	198	195	189	182	173	162	150	138	125	111	98	84	70	57	44	33	23	15	9
100%	100%	98%	95%	91%	87%	81%	75%	69%	63%	56%	49%	42%	35%	29%	22%	17%	12%	8%	5%

Intensities in 90° c-plane

0°	5°	10°	15°	20°	25°	30°	35°	40°	45°	50°	55°	60°	65°	70°	75°	80°	85°	90°	95°
199	198	195	190	183	174	164	152	139	126	113	99	85	71	57	43	29	15	5	2
100%	100%	98%	95%	92%	87%	82%	76%	70%	63%	57%	50%	43%	35%	29%	22%	14%	8%	3%	1%

Intensities in 180° c-plane

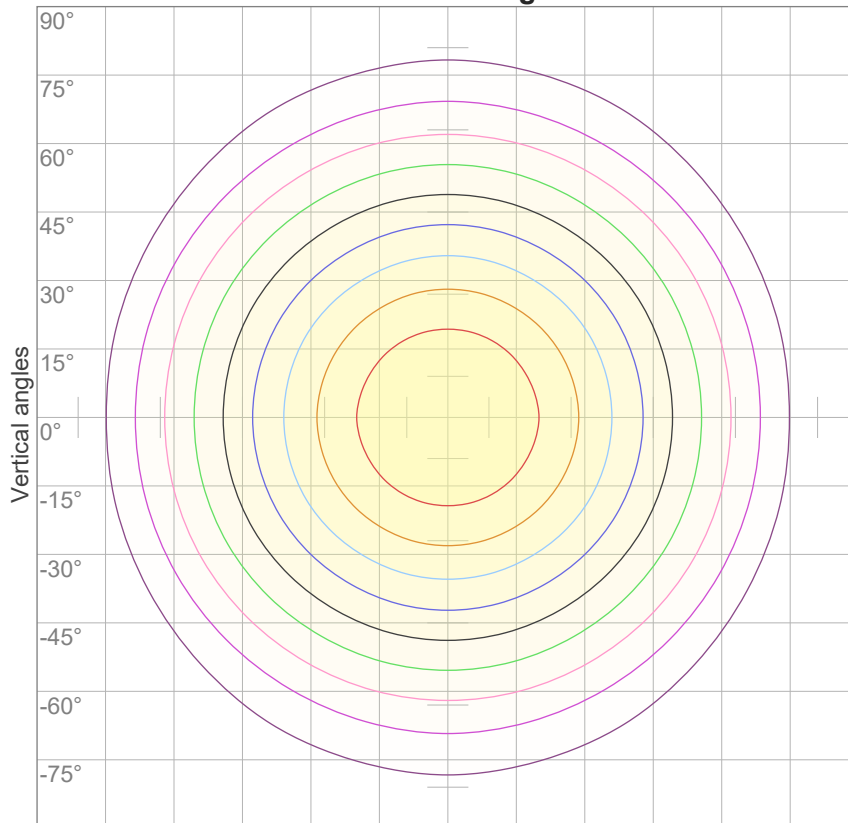
0°	5°	10°	15°	20°	25°	30°	35°	40°	45°	50°	55°	60°	65°	70°	75°	80°	85°	90°	95°
199	198	195	189	182	173	162	150	138	125	111	98	84	70	57	44	33	23	15	9
100%	100%	98%	95%	91%	87%	81%	75%	69%	63%	56%	49%	42%	35%	29%	22%	17%	12%	8%	5%

Intensities in 270° c-plane

0°	5°	10°	15°	20°	25°	30°	35°	40°	45°	50°	55°	60°	65°	70°	75°	80°	85°	90°	95°
199	198	195	190	183	174	164	152	139	126	113	99	85	71	57	43	29	15	5	2
100%	100%	98%	95%	92%	87%	82%	76%	70%	63%	57%	50%	43%	35%	29%	22%	14%	8%	3%	1%

Beam angle 50%	Field angle 10%	Cutoff angle 2,5%	Intensity ratio in 120° cone	Intensity ratio in 90° cone
108.9°	170.2°	191.4°	74.4%	51.0%

iso-candela diagram



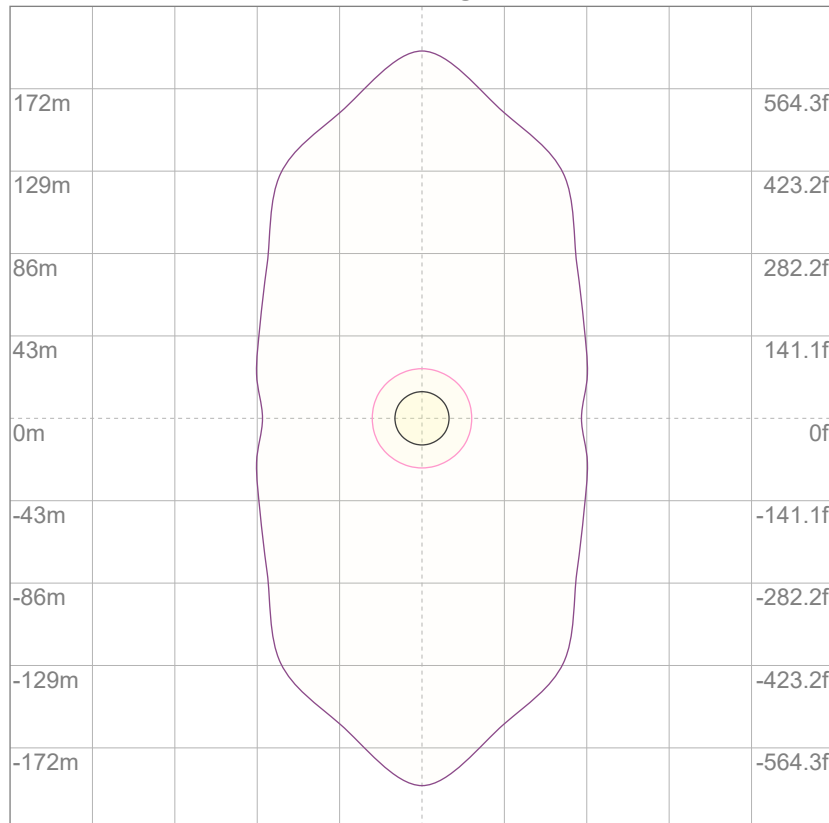
10%	20 cd
20%	40 cd
30%	60 cd
40%	80 cd
50%	100 cd
60%	120 cd
70%	139 cd
80%	159 cd
90%	179 cd

Conditions:

Number of c-planes: 12

Candela at center: 199 cd

iso-lux diagram



3%	59.8m lx
5%	99.6m lx
10%	0.199 lx
30%	0.598 lx
50%	0.996 lx

Conditions:

Number of c-planes: 12

Lux at center: 1.99 lx

*Lux distribution on a surface
when lamp is mounted at 10
meters from the surface.*

Mounting height: 10 meters (33 feet)

Glare evaluation according to UGR

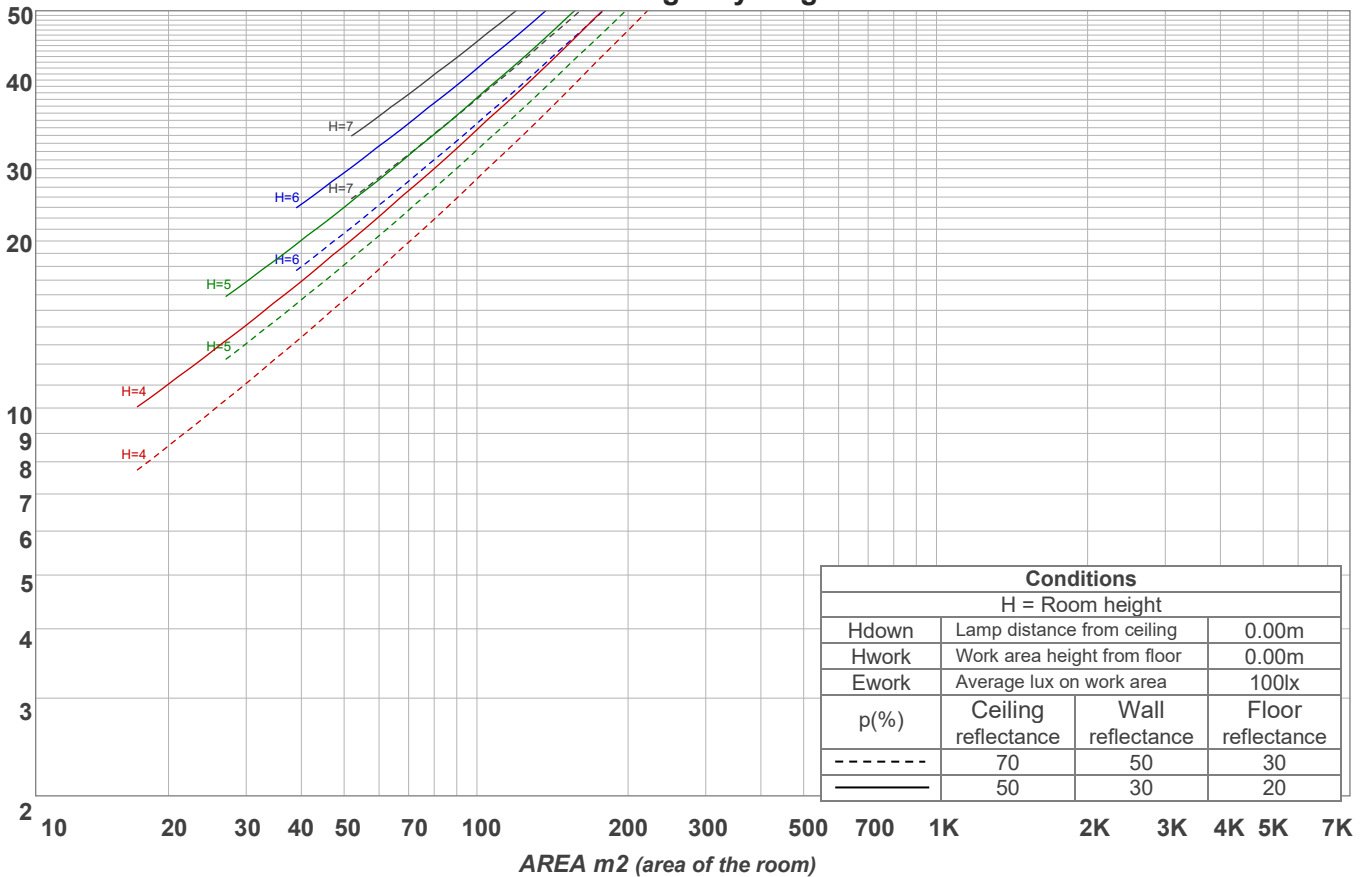
p Ceiling		70	70	50	50	30	70	70	50	50	30
p Walls		50	30	50	30	30	50	30	50	30	30
p Floor		20	20	20	20	20	20	20	20	20	20
Room size X Y		Viewing direction at right angles to lamp axis					Viewing direction parallel to lamp axis				
2H	2H	19.3	20.5	19.5	20.9	21.1	21.0	22.2	21.2	22.5	22.8
	3H	20.4	21.7	20.9	22.0	22.3	22.5	23.8	23.0	24.1	24.4
	4H	20.9	22.1	21.4	22.5	22.8	23.3	24.5	23.7	24.8	25.1
	6H	21.4	22.5	21.7	22.8	23.2	24.0	25.0	24.3	25.4	25.8
	8H	21.5	22.6	21.9	22.9	23.4	24.2	25.2	24.6	25.6	26.0
	12H	21.6	22.6	22.0	23.0	23.5	24.3	25.4	24.7	25.7	26.2
4H	2H	19.9	21.1	20.3	21.4	21.7	21.2	22.5	21.7	22.8	23.1
	3H	21.3	22.4	21.7	22.7	23.2	23.1	24.1	23.5	24.5	25.0
	4H	21.9	22.8	22.4	23.3	23.8	23.9	24.8	24.4	25.3	25.8
	6H	22.4	23.3	22.9	23.7	24.1	24.6	25.5	25.1	25.9	26.3
	8H	22.6	23.4	23.1	23.8	24.2	24.9	25.7	25.4	26.1	26.5
	12H	22.7	23.4	23.2	23.9	24.4	25.1	25.8	25.6	26.2	26.8
8H	4H	22.2	23.0	22.7	23.4	23.8	24.0	24.8	24.5	25.2	25.6
	6H	22.8	23.5	23.4	24.0	24.6	24.8	25.5	25.4	26.0	26.6
	8H	23.1	23.7	23.7	24.2	24.9	25.2	25.8	25.7	26.3	27.0
	12H	23.4	23.9	24.0	24.4	25.0	25.5	26.0	26.1	26.5	27.1
12H	4H	22.2	22.9	22.7	23.4	23.9	24.0	24.7	24.5	25.1	25.7
	6H	22.9	23.5	23.5	24.0	24.7	24.9	25.4	25.4	26.0	26.7
	8H	23.3	23.7	23.9	24.3	24.9	25.2	25.7	25.9	26.3	26.9
Variation of the observer position for the luminaire distance S											
S = 1.0H		0.1 / -0.1					0.1 / -0.1				
S = 1.5H		0.2 / -0.3					0.3 / -0.4				
S = 2.0H		0.5 / -0.7					0.8 / -0.8				
CIE 117-1995. Corrected glare indices referring to 580 lm total luminous flux											

Coefficients of Utilization

Ceiling reflectance	80				70				50			30			10			0
Wall reflectance	70	50	30	10	70	50	30	10	50	30	10	50	30	10	50	30	10	0
Floor reflectance	20	20	20	20	20	20	20	20	20	20	20	20	20	20	20	20	20	0
RCR	(RCR: Room Cavity Ratio) Room Values are expressed as percentage of Lumens delivered to the task surface																	
0	119	119	119	119	116	116	116	116	110	110	110	105	105	105	100	100	100	98
1	107	102	98	93	104	100	96	92	95	92	88	91	88	85	87	85	82	80
2	97	89	82	76	95	87	80	74	83	77	72	79	74	70	76	72	69	66
3	89	78	69	63	86	76	68	62	73	66	60	70	64	59	67	62	58	56
4	81	69	60	53	79	67	59	52	65	57	51	62	56	51	60	54	50	47
5	75	61	52	45	72	60	52	45	58	50	44	56	49	44	54	48	43	41
6	69	55	46	40	67	54	46	39	52	45	39	50	44	38	49	43	38	36
7	64	50	41	35	62	49	41	35	48	40	34	46	39	34	44	38	34	32
8	59	46	37	31	58	45	37	31	43	36	31	42	35	30	41	35	30	28
9	56	42	34	28	54	41	33	28	40	33	28	39	32	28	38	32	27	25
10	52	39	31	26	51	38	31	25	37	30	25	36	30	25	35	29	25	23

LAMPS (number of lamps)

Luminaire budgetary diagram



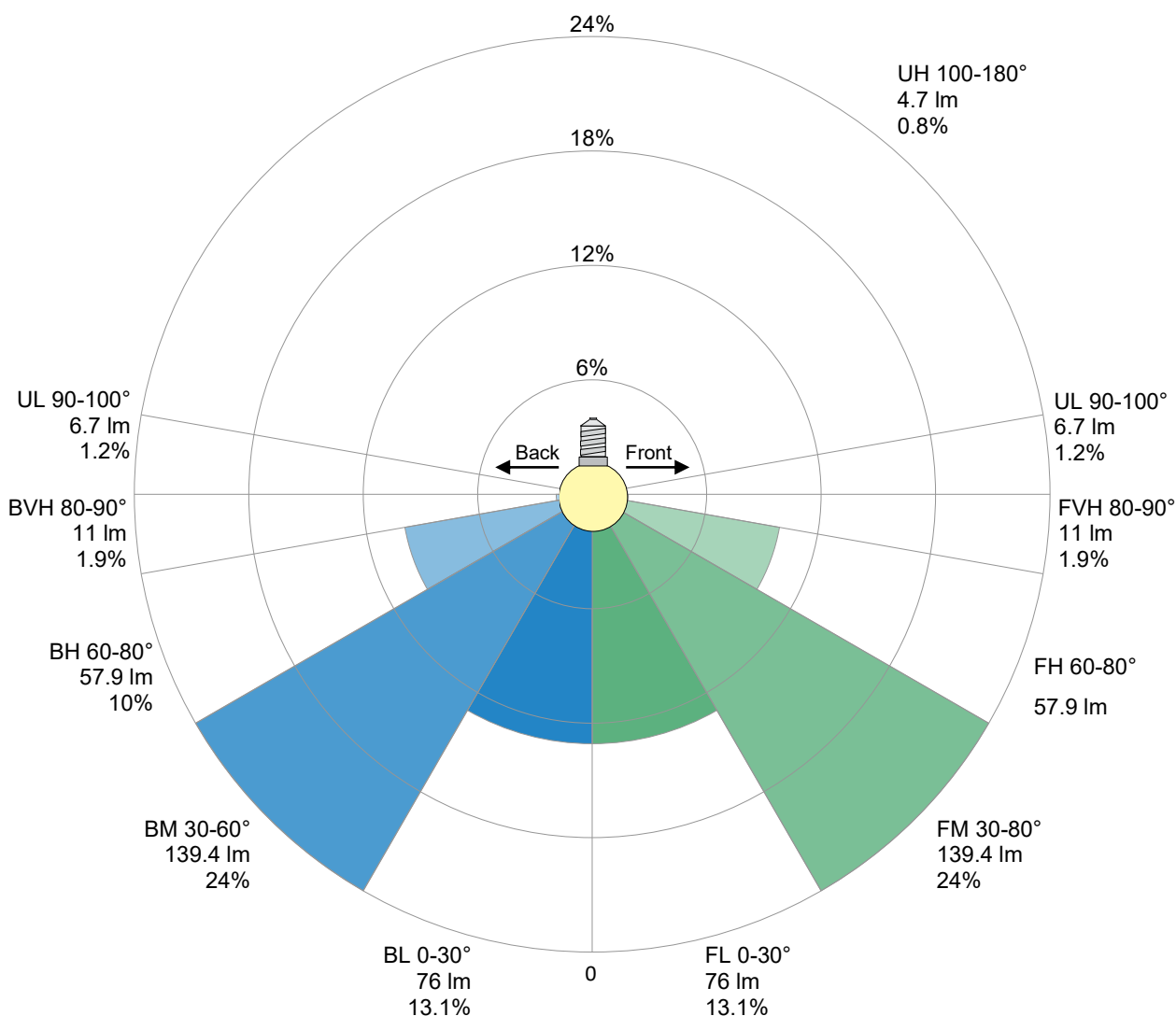
Zonal Lumen Summary

0°-10°	10°-20°	20°-30°	30°-40°	40°-50°	50°-60°	60°-70°	70°-80°	80°-90°
18.8 lm	53.5 lm	79.8 lm	94.5 lm	96.8 lm	87.8 lm	69.8 lm	46.0 lm	21.7 lm
90°-100°	100°-110°	110°-120°	120°-130°	130°-140°	140°-150°	150°-160°	160°-170°	170°-180°
6.51 lm	1.66 lm	0.801 lm	0.643 lm	0.565 lm	0.423 lm	0.308 lm	0.176 lm	0.058 lm

LCS table

BUG rating:	B0 U1 G1	
Forward light	Lumens	Lumens %
Low(0-30):	76	13.1%
Medium(30-60):	139.4	24%
High(60-80):	57.9	10%
Very high(80-90):	11	1.9%
Back light		
Low(0-30):	76	13.1%
Medium(30-60):	139.4	24%
High(60-80):	57.9	10%
Very high(80-90):	11	1.9%
Uplight		
Low(90-100):	6.7	1.2%
High(100-180):	4.7	0.8%

LCS graph



Flicker curve (complete sampled flicker signal)



Flicker frame (frame of one flicker period)



Flicker FFT (frequency scope of flicker curve)



Flicker results:

Flicker frequency:		n/a Hz	
Flicker index:	n/a	JA8/10 40Hz	n/a %
Flicker percentage:	n/a %	JA8/10 90Hz	n/a %
SVM: (Visual flicker)	n/a	JA8/10 200Hz	n/a %
PstLM	n/a	JA8/10 400Hz	n/a %
Mp	n/a	JA8/10 1000Hz	n/a %

Flicker conditions:

Sample rate:	n/a samples/second
--------------	--------------------