

Light efficiency:

79 Lumen/Watt

Light quality:

CRI: 81.4

Color temperature:

3368 K

Output: 678 lm

Peak: 235 cd

Power: 8.6 W

PF: 1.0



Tracking number: [n/a](#)

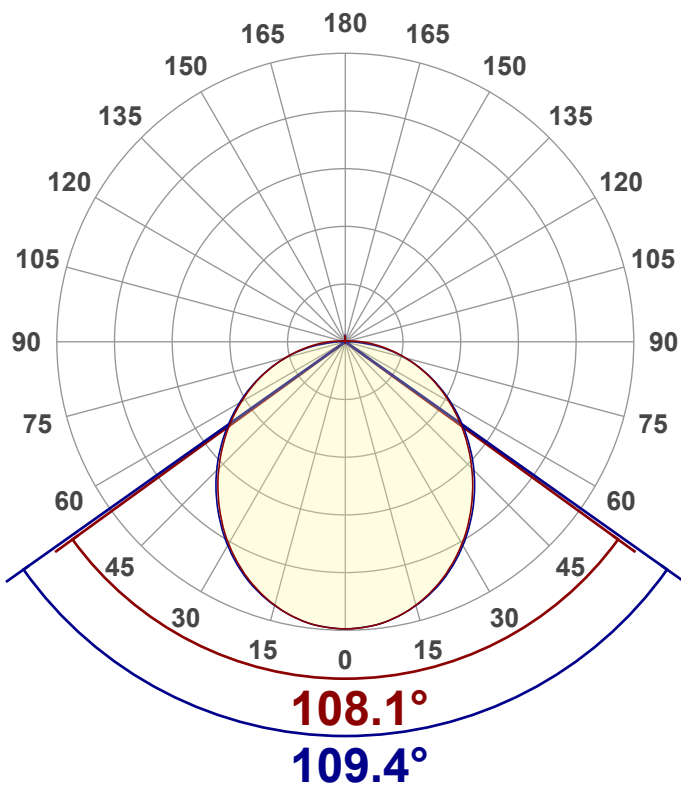
Product name:  
**NLAD5.335E**

Item number:

Date and time:  
**10/16/2025 11:51:33 AM**

Operator:  
**MW**

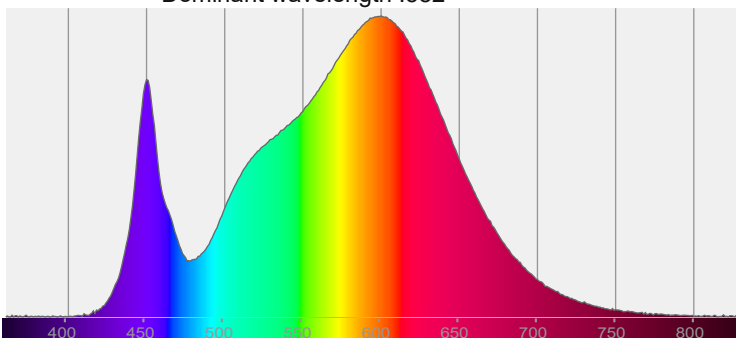
Description:  
**color:3500K,  
Power:17.28w/m,voltage:24V,length  
:0.5m**



CIE 1931  
x: 0.414  
y: 0.396

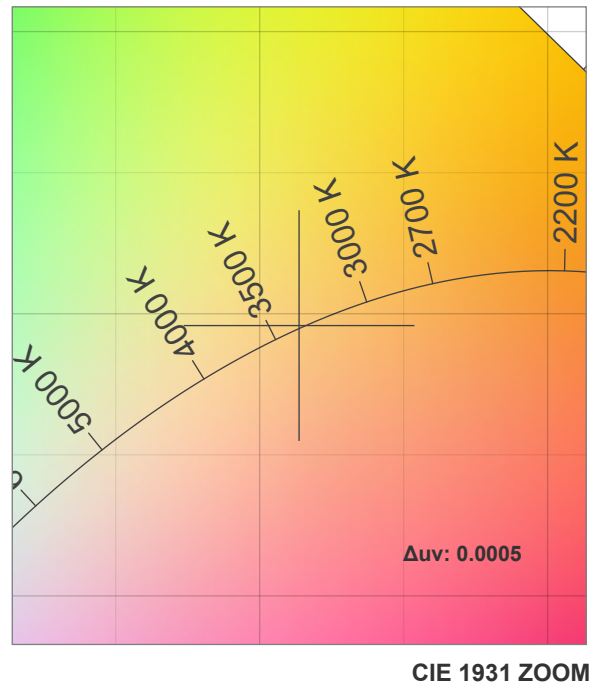
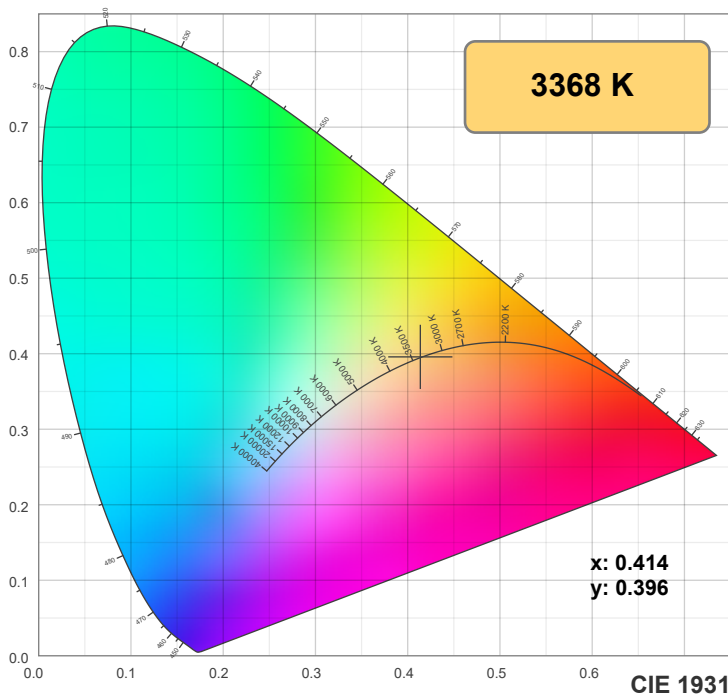
Spectra: Peak wavelength :600

Dominant wavelength :582

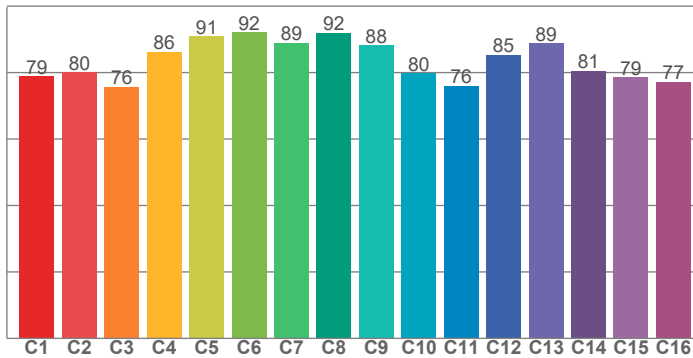


Power

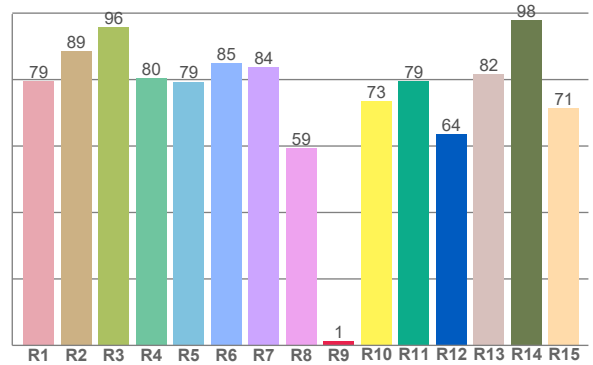
Voltage: 24.0 V  
Current: 0.357 A  
Frequency: 0 Hz



**TM-30: 83.4**



**CRI: 81.4 (R1-R8)**



CRI R values, only R1-R8 are used to calculate final CRI value

R1	R2	R3	R4	R5	R6	R7	R8	R9	R10	R11	R12	R13	R14	R15
79.5	88.5	95.8	80.4	79.4	85.0	83.8	59.3	1.2	73.4	79.4	63.5	81.5	97.8	71.5

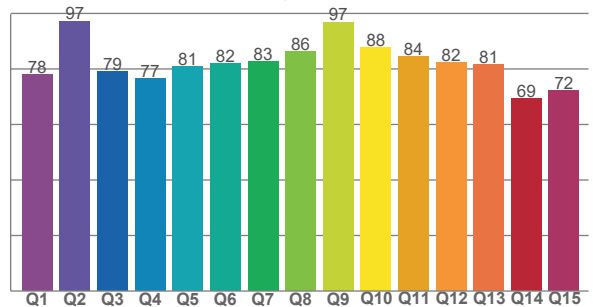
TM30 C values, 16 binned values out of total of 99 C values

C1	C2	C3	C4	C5	C6	C7	C8	C9	C10	C11	C12	C13	C14	C15	C16
78.8	80.2	75.7	86.3	90.9	92.0	89.0	92.0	88.1	79.7	76.0	85.3	88.8	80.6	78.6	77.2

CQS Q values

Q1	Q2	Q3	Q4	Q5	Q6	Q7	Q8	Q9	Q10	Q11	Q12	Q13	Q14	Q15
78.0	97.2	79.0	76.6	81.0	81.9	82.6	86.3	96.9	87.7	84.4	82.3	81.5	69.2	72.3

**CQS: 80.9**



## Color parameters

Color temperature	Color rendering index	Red component	Color fidelity	Color gamut	Color quality scale	Color coordinate cie 1931	Color coordinate cie 1931	Color coordinate	Color coordinate	Color deviation from black body
CCT	CRI	CRI R9	TM30 Rf	TM30 Rg	CQS	x	y	u	v	Δuv
3368 K	81.4	1.2	83.4	96.2	80.9	0.414	0.396	0.239	0.343	0.0005

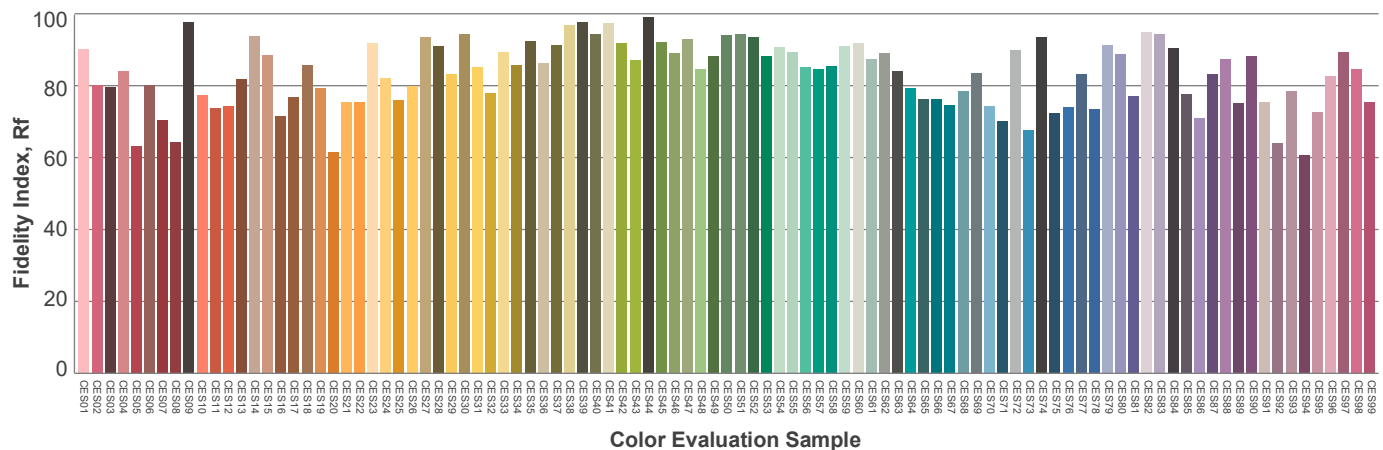
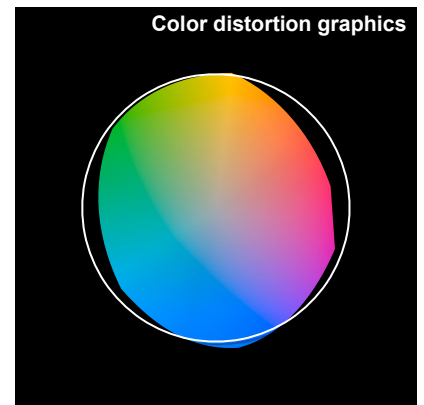
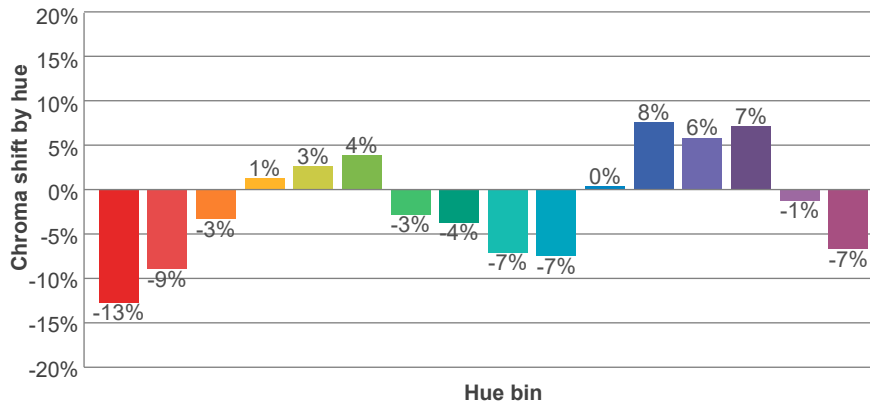
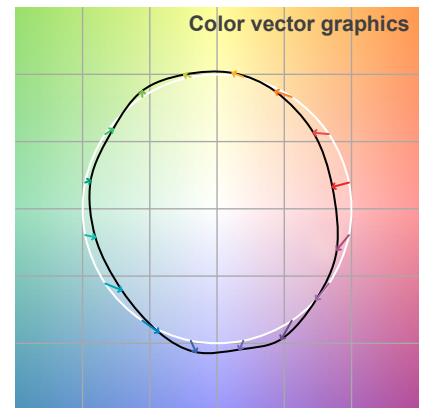
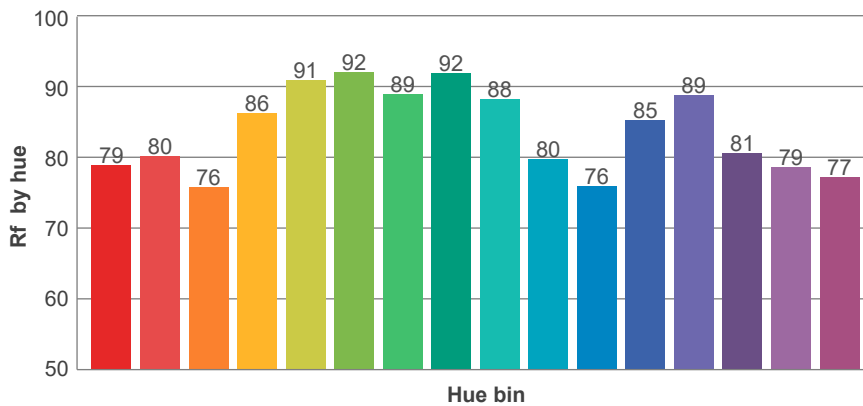
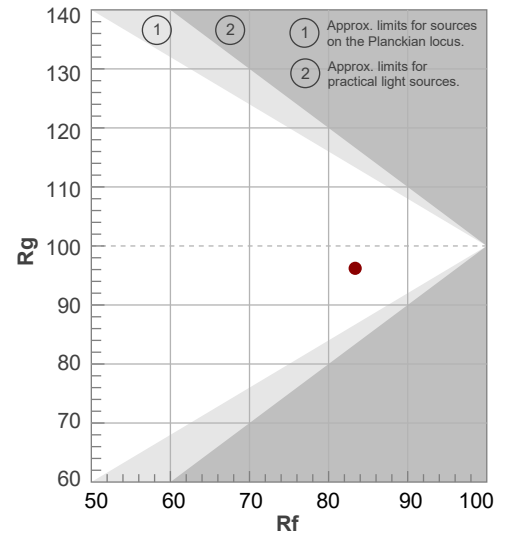
**Rf 83.4**

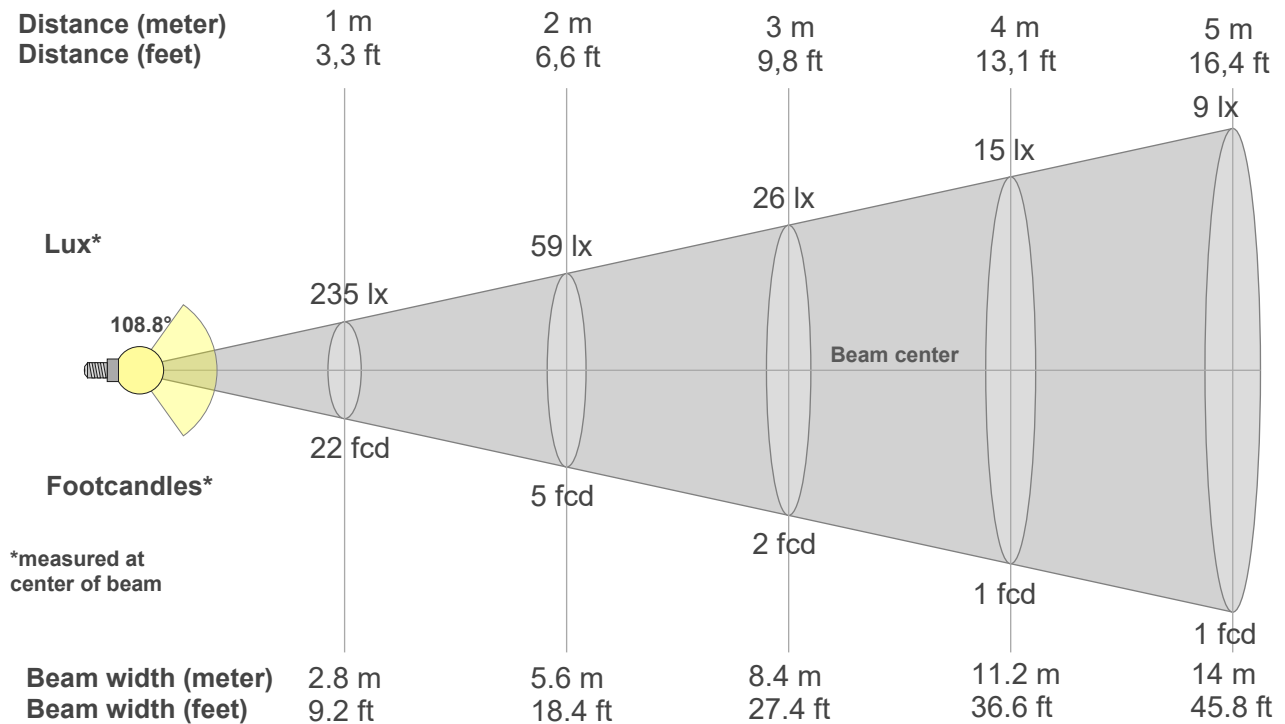
Fidelity index Rf

**Rg 96.2**

Gamut index Rg

Hue Bin	R <sub>f</sub>	Shifts (%)	
		Chroma	Hue
1	79	-13%	-1%
2	80	-9%	7%
3	76	-3%	12%
4	86	1%	8%
5	91	3%	5%
6	92	4%	-2%
7	89	-3%	-6%
8	92	-4%	-2%
9	88	-7%	3%
10	80	-7%	11%
11	76	0%	15%
12	85	8%	5%
13	89	6%	-4%
14	81	7%	-14%
15	79	-1%	-15%
16	77	-7%	-13%





## Beam intensities from 1-20m

1m	2m	3m	4m	5m	6m	7m	8m	9m	10m	11m	12m	13m	14m	15m	16m	17m	18m	19m	20m
3.3ft	6.6ft	9.8ft	13.1ft	16.4ft	19.7ft	23ft	26.2ft	29.5ft	32.8ft	36.1ft	39.4ft	42.7ft	45.9ft	49.2ft	52.5ft	55.8ft	59.1ft	62.3ft	65.6ft
235lx	59lx	26lx	15lx	9lx	7lx	5lx	4lx	3lx	2lx	2lx	2lx	1lx	1lx	1lx	1lx	1lx	1lx	1lx	1lx
21.8fcd	5.5fcd	2.4fcd	1.4fcd	0.9fcd	0.6fcd	0.4fcd	0.3fcd	0.3fcd	0.2fcd	0.2fcd	0.2fcd	0.1fcd	0.1fcd	0.1fcd	0.1fcd	0.1fcd	0.1fcd	0.1fcd	0.1fcd

## Intensities in 0° c-plane

0°	5°	10°	15°	20°	25°	30°	35°	40°	45°	50°	55°	60°	65°	70°	75°	80°	85°	90°	95°
235	234	230	223	215	204	191	177	162	147	131	115	99	83	67	51	37	24	14	7
100%	100%	98%	95%	91%	87%	81%	75%	69%	62%	56%	49%	42%	35%	28%	22%	16%	10%	6%	3%

## Intensities in 90° c-plane

0°	5°	10°	15°	20°	25°	30°	35°	40°	45°	50°	55°	60°	65°	70°	75°	80°	85°	90°	95°
235	234	230	224	215	205	193	179	165	149	133	117	100	84	67	51	34	17	6	2
100%	100%	98%	95%	92%	87%	82%	76%	70%	63%	57%	50%	43%	36%	29%	22%	14%	7%	2%	1%

## Intensities in 180° c-plane

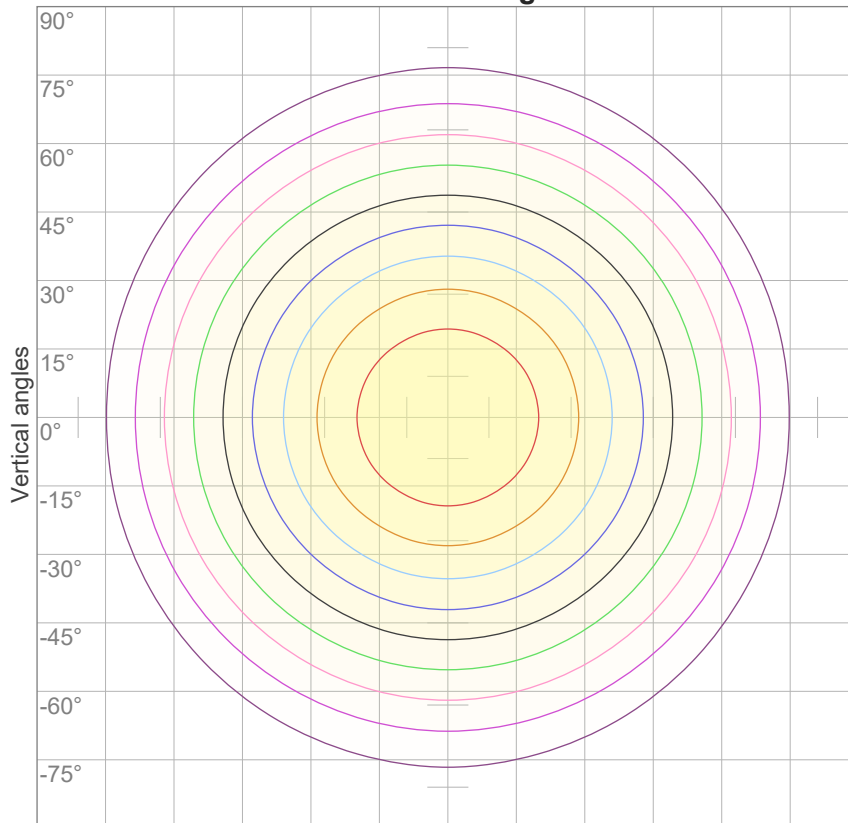
0°	5°	10°	15°	20°	25°	30°	35°	40°	45°	50°	55°	60°	65°	70°	75°	80°	85°	90°	95°
235	234	230	223	215	204	191	177	162	147	131	115	99	83	67	51	37	24	14	7
100%	100%	98%	95%	91%	87%	81%	75%	69%	62%	56%	49%	42%	35%	28%	22%	16%	10%	6%	3%

## Intensities in 270° c-plane

0°	5°	10°	15°	20°	25°	30°	35°	40°	45°	50°	55°	60°	65°	70°	75°	80°	85°	90°	95°
235	234	230	224	215	205	193	179	165	149	133	117	100	84	67	51	34	17	6	2
100%	100%	98%	95%	92%	87%	82%	76%	70%	63%	57%	50%	43%	36%	29%	22%	14%	7%	2%	1%

Beam angle 50%	Field angle 10%	Cutoff angle 2,5%	Intensity ratio in 120° cone	Intensity ratio in 90° cone
108.8°	168.2°	186.7°	75.0%	51.5%

iso-candela diagram



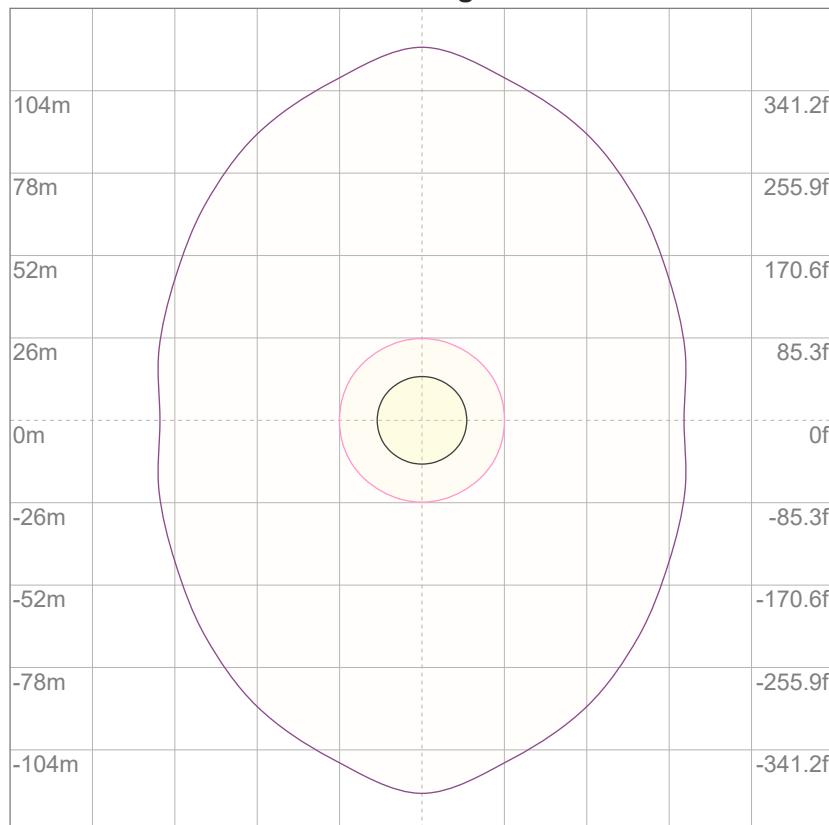
10%	24 cd
20%	47 cd
30%	71 cd
40%	94 cd
50%	118 cd
60%	141 cd
70%	165 cd
80%	188 cd
90%	212 cd

Conditions:

Number of c-planes: 12

Candela at center: 235 cd

iso-lux diagram



3%	70.5m lx
5%	0.118 lx
10%	0.235 lx
30%	0.705 lx
50%	1.18 lx

Conditions:

Number of c-planes: 12

Lux at center: 2.35 lx

*Lux distribution on a surface when lamp is mounted at 10 meters from the surface.*

**Glare evaluation according to UGR**

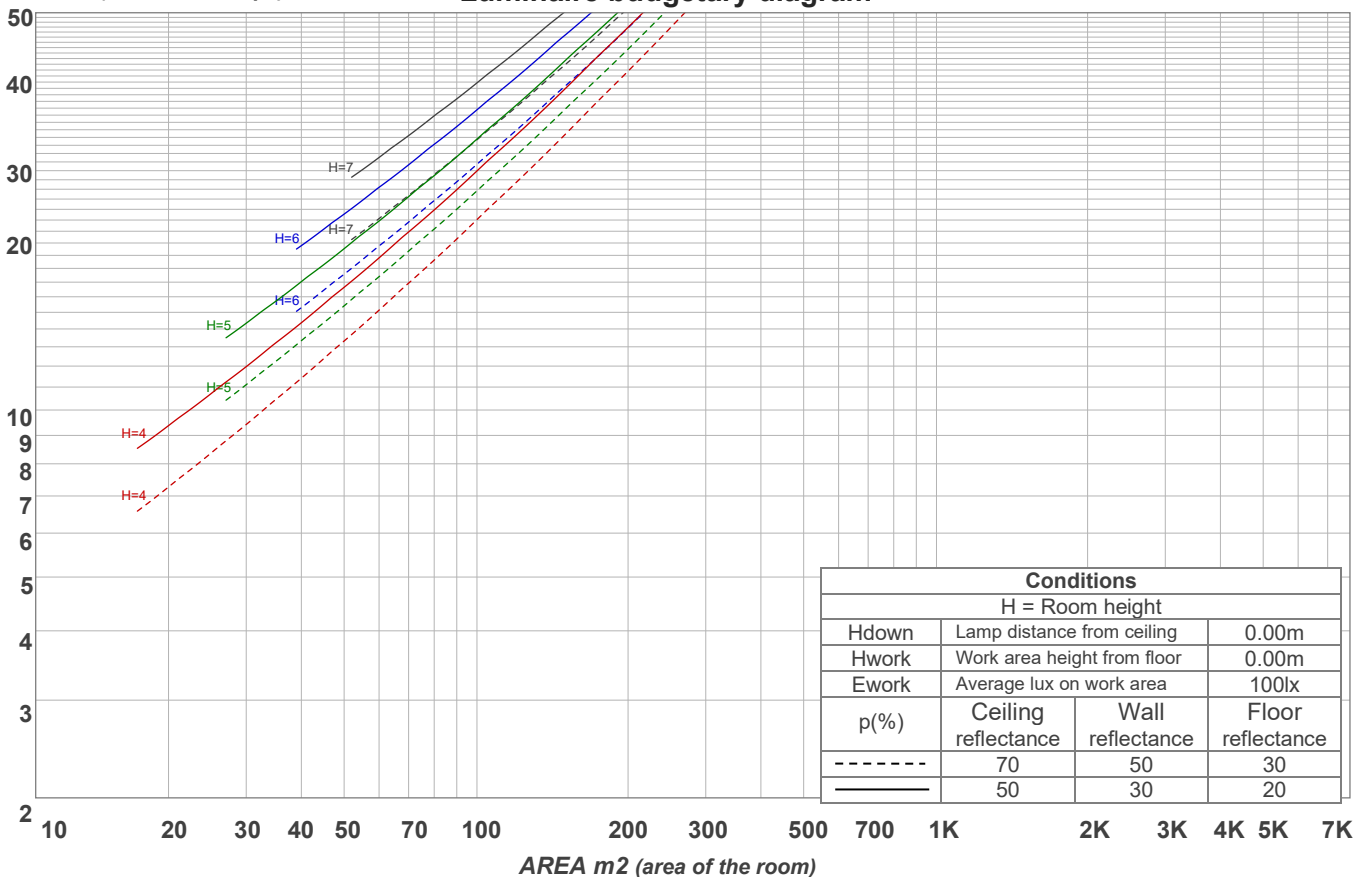
p Ceiling		70	70	50	50	30	70	70	50	50	30
p Walls		50	30	50	30	30	50	30	50	30	30
p Floor		20	20	20	20	20	20	20	20	20	20
Room size X      Y		Viewing direction at right angles to lamp axis					Viewing direction parallel to lamp axis				
2H	2H	19.9	21.1	20.1	21.4	21.7	21.6	22.8	21.8	23.2	23.4
	3H	21.0	22.3	21.5	22.6	22.8	23.2	24.4	23.6	24.8	25.0
	4H	21.5	22.7	21.9	23.0	23.3	23.9	25.1	24.4	25.4	25.7
	6H	21.9	23.0	22.3	23.3	23.7	24.6	25.7	24.9	26.0	26.4
	8H	22.0	23.1	22.4	23.4	23.9	24.8	25.9	25.2	26.2	26.6
	12H	22.1	23.1	22.5	23.5	24.0	25.0	26.0	25.4	26.3	26.8
4H	2H	20.5	21.7	20.9	22.0	22.3	21.9	23.1	22.3	23.4	23.7
	3H	21.9	23.0	22.3	23.3	23.8	23.7	24.8	24.1	25.1	25.6
	4H	22.5	23.4	22.9	23.8	24.4	24.5	25.5	25.0	25.9	26.5
	6H	22.9	23.8	23.4	24.2	24.6	25.2	26.1	25.7	26.5	26.9
	8H	23.1	23.9	23.6	24.3	24.7	25.5	26.3	26.0	26.7	27.1
	12H	23.2	23.9	23.7	24.3	24.9	25.7	26.4	26.2	26.8	27.3
8H	4H	22.8	23.6	23.3	24.0	24.4	24.6	25.4	25.2	25.8	26.3
	6H	23.4	24.0	23.9	24.5	25.1	25.5	26.1	26.0	26.6	27.2
	8H	23.6	24.2	24.2	24.7	25.4	25.8	26.4	26.3	26.9	27.6
	12H	23.8	24.3	24.4	24.8	25.5	26.1	26.6	26.7	27.1	27.7
12H	4H	22.8	23.5	23.3	23.9	24.4	24.6	25.3	25.1	25.7	26.3
	6H	23.5	24.0	24.0	24.6	25.2	25.5	26.0	26.0	26.6	27.3
	8H	23.7	24.2	24.3	24.7	25.4	25.8	26.3	26.5	26.8	27.5
Variation of the observer position for the luminaire distance S											
S = 1.0H		0.1 / -0.2					0.1 / -0.1				
S = 1.5H		0.2 / -0.4					0.3 / -0.4				
S = 2.0H		0.5 / -0.7					0.8 / -0.8				
CIE 117-1995. Corrected glare indices referring to 678 lm total luminous flux											

## Coefficients of Utilization

Ceiling reflectance	80				70				50			30			10			0
Wall reflectance	70	50	30	10	70	50	30	10	50	30	10	50	30	10	50	30	10	0
Floor reflectance	20	20	20	20	20	20	20	20	20	20	20	20	20	20	20	20	20	0
RCR	(RCR: Room Cavity Ratio) Room Values are expressed as percentage of Lumens delivered to the task surface																	
0	119	119	119	119	116	116	116	116	110	110	110	105	105	105	101	101	101	99
1	108	103	98	94	105	100	96	92	96	92	89	91	89	86	87	85	83	81
2	98	89	82	76	95	87	80	75	83	78	73	80	75	71	76	73	69	67
3	89	78	70	63	86	76	68	62	73	66	61	70	64	60	67	62	58	56
4	81	69	60	53	79	68	59	53	65	58	52	62	56	51	60	55	50	48
5	75	62	52	46	73	60	52	45	58	51	45	56	49	44	54	48	43	41
6	69	56	46	40	67	54	46	40	52	45	39	51	44	39	49	43	38	36
7	64	50	41	35	62	49	41	35	48	40	35	46	39	34	45	39	34	32
8	60	46	37	31	58	45	37	31	44	36	31	42	36	31	41	35	30	28
9	56	42	34	28	54	42	34	28	40	33	28	39	32	28	38	32	27	26
10	52	39	31	26	51	38	31	26	37	30	25	36	30	25	35	29	25	23

LAMPS (number of lamps)

## Luminaire budgetary diagram



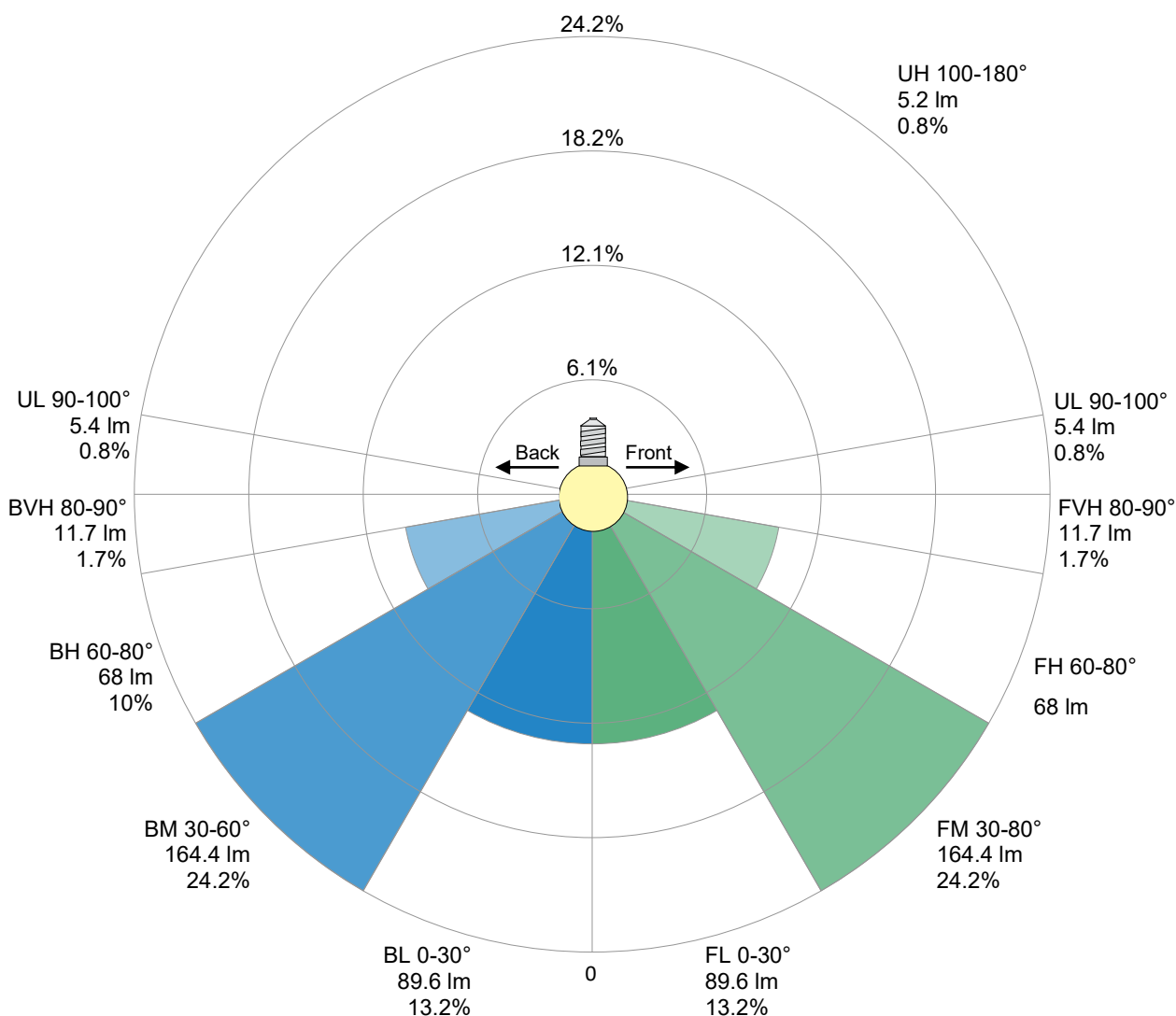
## Zonal Lumen Summary

0°-10°	10°-20°	20°-30°	30°-40°	40°-50°	50°-60°	60°-70°	70°-80°	80°-90°
22.2 lm	63.2 lm	94.2 lm	112 lm	114 lm	103 lm	82.4 lm	53.8 lm	22.9 lm
90°-100°	100°-110°	110°-120°	120°-130°	130°-140°	140°-150°	150°-160°	160°-170°	170°-180°
5.01 lm	1.40 lm	1.01 lm	0.812 lm	0.695 lm	0.554 lm	0.376 lm	0.219 lm	0.071 lm

LCS table

BUG rating:	B0 U1 G1	
Forward light	Lumens	Lumens %
Low(0-30):	89.6	13.2%
Medium(30-60):	164.4	24.2%
High(60-80):	68	10%
Very high(80-90):	11.7	1.7%
Back light		
Low(0-30):	89.6	13.2%
Medium(30-60):	164.4	24.2%
High(60-80):	68	10%
Very high(80-90):	11.7	1.7%
Uplight		
Low(90-100):	5.4	0.8%
High(100-180):	5.2	0.8%

LCS graph



**Flicker curve (complete sampled flicker signal)**



**Flicker frame (frame of one flicker period)**



**Flicker FFT (frequency scope of flicker curve)**



**Flicker results:**

Flicker frequency:		n/a Hz	
Flicker index:	n/a	JA8/10 40Hz	n/a %
Flicker percentage:	n/a %	JA8/10 90Hz	n/a %
SVM: (Visual flicker)	n/a	JA8/10 200Hz	n/a %
PstLM	n/a	JA8/10 400Hz	n/a %
Mp	n/a	JA8/10 1000Hz	n/a %

**Flicker conditions:**

Sample rate:	n/a samples/second
--------------	--------------------