

BOW LX/SX-II Trunnion Mount Installation Instructions



BEFORE YOU BEGIN

- Read these instructions completely and carefully.
- Save these instructions for future use.

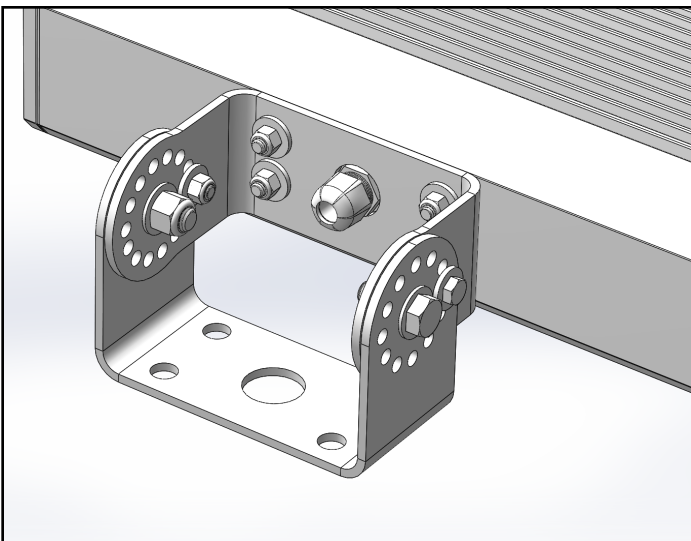


WARNING

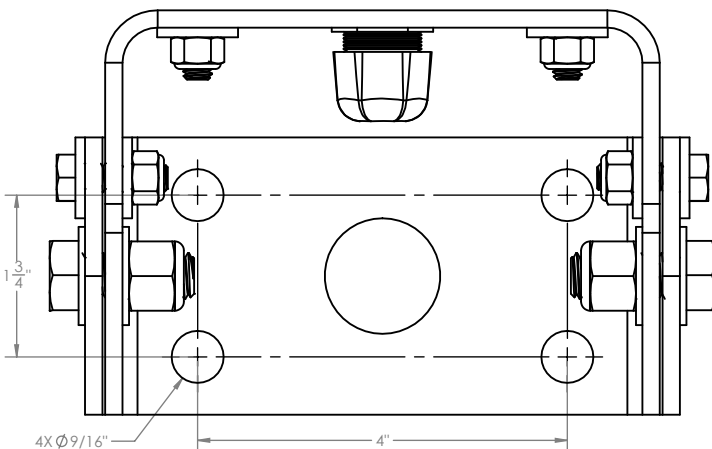
- to avoid possible risk of fire or shock, turn off power prior to installation or maintenance preferably at circuit breaker. Product must be installed following all NEC and local electrical codes.

UNPACKING

- This luminaire has been properly packaged so that no damage shall occur during transportaion. Inspect and confirm.



1. Mount the Trunnion Bracket to a structure using (4) 9/16" dia. mounting holes.
2. Unscrew (2) 5/16"-18 x 1" Hex Head Screws.
3. Loosen (2) 1/2"-13 x 1-1/4" Hex Head Screws.
4. Aim the Luminaire at the desired angle, and reinstall the 5/16"-18 x 1" Hex Head Screws, Flat Washers and Lock Nuts. Tighten to 10 ft-lb. Don't tilt over 50 degrees
5. Tighten 1/2"-13 x 1-1/4" Hex Head Screws to 45 ft-lb.
6. Connect the Wires per NEC and/or any applicable local codes.



19645 ranch Way.
Rancho Dominguez CA 90220
310-512-6480
www.visionairelighting.com

Conforms to
UL STD 1598
Certified To
CAN/US STD C22.2#250#250.0

