

## FEATURES

- Versatile, transitional designed decorative luminaire, created to yield the ultimate in flexibility in LED post top, pendant and catenary Lighting
- Featuring two different optical technologies, Strike and Micro Strike Optics, which provide the best distribution patterns for retrofit or new construction
- Shade and ring options available to enhance the product design and match any application
- Frosted lens option available based on up light and glare concerns. No lens option is also available as optical chamber is completely sealed.
- Control options including photo control, NX Lighting Controls™, programmed timer-based controls and 7-Pin with networked controls



## CONTROL TECHNOLOGY



## SPECIFICATIONS

### CONSTRUCTION

- Driver housing is made of die-cast aluminum
- Shade shall be made from a one-piece aluminum spinning
- Corrosion resistant, die-cast aluminum housing with 1000 hour powder coat paint finish
- For post top configuration, housing is to be mounted over a 2 3/8" to 3" tenon and held in place with 6 set screws
- External hardware is stainless steel
- Frosted lenses are made from a durable acrylic material

### OPTICS

- Micro Strike Optics (80L LED count) maximize uniformity in applications and come standard with mid-power LEDs which evenly illuminate the entire luminous surface area to provide a low glare appearance. Catalog logic found on page 2
- Strike Optics (18L LED count) provide best in class distributions and maximum pole spacing in new applications with high powered LEDs. Strike optics are held in place with a polycarbonate bezel to mimic the appearance of the Micro Strike Optics so both solutions can be combined on the same application. Catalog logic found on page 3
- Both optics maximize target zone illumination with minimal losses at the house-side, reducing light trespass issues. Additional backlight control shields can be added for further reduction of illumination behind the pole
- One-piece silicone gasket ensures a weatherproof seal
- No lens configurations are full cutoff with zero up-light
- All optics are field and factory rotatable
- Listed to UL1598 and CSA22.2 #250.0-24 for wet locations and 40C ambient temperatures

### ELECTRICAL

- Universal 120-277 VAC or 347-480 VAC input voltage, 50/60 Hz
- Ambient operating temperature -40°C to 40°C
- Drivers have greater than 90% power factor and less than 20% THD
- LED drivers have output power over-voltage, over-current protection, and short circuit protection with auto recovery
- Field replaceable surge protection device provides 20kA protection meeting ANSI/ IEEE C62.41.2 Category C High and Surge Location Category C3; Automatically takes fixture off-line for protection when device is compromised

### CONTROLS

- 0- 10V Dimming Drivers are standard and dimming leads are extended out of the luminaire unless control options require connection to the dimming leads. Must specify if wiring leads are to be greater than the 6" standard
- NX Lighting Controls™ available with in fixture wireless control module, features dimming and occupancy sensor
- The housing is designed for an optional twist lock photo control receptacle

### CERTIFICATIONS

- Listed to UL1598 and CSA C22.2#250.0- 24 for wet locations and 40°C ambient temperatures
- 1.5 G rated for ANSI C136.31 high vibration applications
- Luminaire light engine is IP65 rated
- Meets IDA recommendations using 3K CCT configuration with no lensing
- This product meets federal procurement law requirements under the Buy American Act (FAR 52.225-9) and Trade Agreements Act (FAR 52.225-11). See Buy America(n) Solutions (link to <https://www.currentlighting.com/resources/americasolutions>)

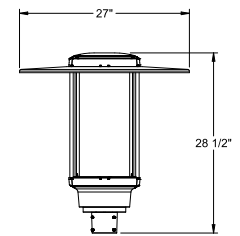
### WARRANTY

- 5 year warranty

# slide



Slide Post Top Mount



	WEIGHT	EPA (FT2) TOTAL
SLD2	26 lbs/ 11.79 kgs	0.66-1.52

# Slide

DECORATIVE – POST TOP

DATE: \_\_\_\_\_ LOCATION: \_\_\_\_\_

TYPE: \_\_\_\_\_ PROJECT: \_\_\_\_\_

CATALOG #: \_\_\_\_\_

## ORDERING GUIDE

Example: SLD2-PT-2S-AF-80L-25-4K7-2-UNV-BLS




CATALOG #

Series	Mounting	Style	Lens	# LED's - Wattage	CCT-CRI	Distribution	Voltage
SLD2	PT Post Top Mount	2S 2 Strut	AF Acrylic Frosted	80L-25	AM Amber Monochromatic*	2 Type 2	UNV (120-277VAC) 347V 480V
			NL No Lens	80L-40	AP Amber Phosphor Converted**	3 Type 3	
		4S 4 Strut	80L-50	27K8 2700K 80CRI 3K7 3000K 70 CRI 3K8 3000K 80CRI 35K8 3500K 80CRI 4K7 4000K 70CRI 4K8 4000K 80CRI 5K7 5000K 70CRI 5K8 5000K 80CRI  *80L only **18L only	4W Type 4 Wide		
			80L-70		4F Type 4 Forward		
		80L-90	5QW Type 5 Square Wide				
		80L-110	2 Type 2				
		18L-25	3 Type 3				
		18L-39	4W Type 4 Wide				
		18L-50	4F Type 4 Forward				
		18L-70	5QW Type 5 Square Wide				
			FR Front Row				
			5W Type 5 Wide				
			5QN Type 5 Square Narrow				
			5QM Type 5 Square Medium				
			5RW Type 5 Rectangular				
	C Corner Optic						
	TC Tennis Court						

Options	Shade Options	Decorative Options	Networked Controls	Stand Alone Sensors	Photocontrol	Programmed Controls
BC Backlight Control	CTS Curved Shade	DR 3 Decorative Rings	NXW* NX Networked Wireless Radio Module NXRM2 and Bluetooth Programming, without Sensor	3PR* 3-Pin twist lock 3PR-SC* 3-Pin receptacle with shorting cap 3PR-TL* 3-Pin PCR with photocontrol 7PR* 7-Pin receptacle 7PR-SC* 7-Pin receptacle with shorting cap  * only on post top	PC Button Photocell	ADD AutoDim Timer Based Dimming ADT AutoDim Time of Day Dimming
TB Terminal Block	STS Sloped Shade					
CD Continuous Dimming	FTS Flat Shade NS No Shade					

Control Accessories	Accessory
WIR-RME-L On-fixture Module (7-pin or 5-pin), On / Off / Dim, Daylight Sensor with wiSCAPE Radio, 110–480VAC	BC Backlight Control
NXOFM On-fixture Module (7-pin), On / Off / Dim, Daylight Sensor with NX Radio and Bluetooth® Radio, 120–480VAC	

Colors
BLS Black Gloss Smooth
BLT Black Matte Textured
DBS Dark Bronze Gloss Smooth
DBT Dark Bronze Matte Textured
GTT Graphite Matte Textured
LGS Light Gray Gloss Smooth
LGT Light Gray Matte Textured
PSS Platinum Silver Gloss Smooth
VGT Verde Green Matte Textured
WHS White Gloss Smooth
WHT White Matte Textured
<b>Color Options</b>
CC Custom Color

	Control Option Ordering Logic & Description	Control Option Functionality									Control Option Components
		Networkable	Grouping	Scheduling	Occupancy/Motion	Daylight Harvesting	0-10V Dimming	On/Off Control	Bluetooth App Programming	Sensor Height	
NX Wireless	NXOFMIRID-UNV	✓	✓	✓	Paired with external control	✓	✓	✓	✓	-	 NXOFM-IRID-UV
	NXW	✓	✓	✓	-	-	✓	✓	✓	-	 NXRM2-H
LightGRID+	WIR-RME-L	✓	-	✓	-	-	✓	✓	Gateway	-	 WIR-RME-L

## DEFAULT SETTINGS

Occupancy Sensor	Enabled
Occupancy Sensor Sensitivity	7
Occupancy Sensor Timeout	15 Minutes
Occupied Dim Level	100%
Unoccupied Dim Level	0%
Daylight Sensor	Disabled
Bluetooth	Enabled
2.4GHz Wireless Mesh	On
"Passcode Factory Passcode: HubbN3T!"	Enabled

Occupancy Sensor	Enabled
Occupancy Sensor Sensitivity	7
Occupancy Sensor Timeout	8 Minutes
Occupied Dim Level	100%
Unoccupied Dim Level	50%
Daylight Sensor	Disabled

## NX LIGHTING CONTROLS FREE APP | CONTROLS TECH SUPPORT 800-888-8006 (7:00 AM - 7:00 PM)



The NX Lighting Controls App is free to use mobile application for programming both NX Lighting Controls System or Standalone Bluetooth Sensors. The mobile app allows you to configure devices, discover and setup wireless enable luminaires and program NX system settings.

Apple App: <https://apps.apple.com/us/app/nx-lighting-controls/id962112904>

Google Play: [https://play.google.com/store/apps/details?id=io.cordova.NXBTR&hl=en\\_US&gl=US](https://play.google.com/store/apps/details?id=io.cordova.NXBTR&hl=en_US&gl=US)






Apple App



Google Play

## OUTDOOR LIGHTING CONTROLS OPTIONS | CONTROLS FUNCTIONALITY

	Control Option Ordering Logic & Description	Control Option Functionality									Control Option Components
		Networkable	Grouping	Scheduling	Occupancy/Motion	Daylight Harvesting	0-10V Dimming	On/Off Control	Bluetooth App Programming	Sensor Height	
Independent	ADD	-	-	✓	-	-	-	✓	-	-	ADD
	ADT	-	-	✓	-	-	-	✓	-	-	ADT
	7PR	-	-	Paired with external control	-	Paired with external control	-	Paired with external control	-	-	7PR
	7PR-SC	-	-	-	-	-	-	-	-	-	 7PR-SC
	3PR	-	-	-	-	-	-	Paired with external control	-	-	3PR
	3PR-SC	-	-	-	-	-	-	-	-	-	 3PR-SC
	3PR-TL	-	-	-	-	✓	-	✓	-	-	 3PR-TL

## PROGRAMMED CONTROLS

### ADD-AutoDim Timer Based Options

- Light delay options from 1-9 hours after the light is turned on to dim the light by 10-100%. To return the luminaire to its original light level there are dim return options from 1-9 hours after the light has been dimmed previously.

EX: ADD-6-5-R6

ADD CONTROL OPTIONS	CONFIGURATIONS CHOICES	EXAMPLE CHOICE PICKED
Auto-Dim Options	1-9 Hours	6 - Delay 6 hours
Auto-Dim Brightness	10-100% Brightness	5 - Dim to 50% brightness
Auto-Dim Return	Delay 0-9 Hours	R6 - Return to full output after 6 hours

### ADT-AutoDim Time of Day Based Option

- Light delay options from 1AM-9PM after the light is turned on to dim the light by 10-100%. To return the luminaire to its original light level there are dim return options from 1AM-9PM after the light has been dimmed previously.

EX: ADT-6-5-R6

ADD CONTROL OPTIONS	CONFIGURATIONS CHOICES	EXAMPLE CHOICE PICKED
Auto-Dim Options	12-3 AM and 6-11 PM	6 - Dim at 6PM
Auto-Dim Brightness	10-100% Brightness	5 - Dim to 50%
Auto-Dim Return	12-6 AM and 9-11P	R6 - Return to full output at 6AM

# Slide

DECORATIVE – POST TOP

## DIMENSIONS

POST TOP - NO SHADE (N5)				
	SLD2-PT-2S-NL-NS	SLD2-PT-2S-NL-NS-DR	SLD2-PT-4S-NL-NS	SLD2-PT-4S-NL-NS-DR
	SLD2-PT-2S-AF-NS	SLD2-PT-2S-AF-NS-DR	SLD2-PT-4S-AF-NS	SLD2-PT-4S-AF-NS-DR
POST TOP - FLAT (FTS)				
	SLD2-PT-2S-NL-FTS-DR	SLD2-PT-2S-NL-FTS	SLD2-PT-4S-NL-FTS	SLD2-PT-4S-NL-FTS-DR
	SLD2-PT-2S-AF-FTS-DR	SLD2-PT-2S-AF-FTS	SLD2-PT-4S-AF-FTS	SLD2-PT-4S-AF-FTS-DR

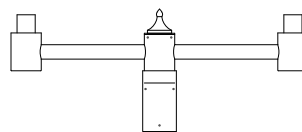
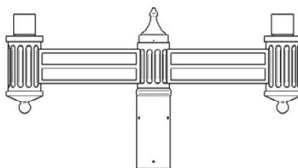
# Slide

DECORATIVE – POST TOP

## DIMENSIONS

POST TOP - CURVE (CTS)				
	SLD2-PT-2S-NL-CTS	SLD2-PT-2S-NL-CTS-DR	SLD2-PT-4S-NL-CTS	SLD2-PT-4S-NL-CTS-DR
	SLD2-PT-2S-AF-CTS	SLD2-PT-2S-AF-CTS-DR	SLD2-PT-4S-AF-CTS	SLD2-PT-4S-AF-CTS-DR
POST TOP - STRAIGHT (STS)				
	SLD2-PT-2S-NL-STS	SLD2-PT-2S-NL-STS-DR	SLD2-PT-4S-NL-STS	SLD2-PT-4S-NL-STS-DR
	SLD2-PT-2S-AF-STS	SLD2-PT-2S-AF-STS-DR	SLD2-PT-4S-AF-STS	SLD2-PT-4S-AF-STS-DR

## ARMS



GRANDVILLE ARM

Recommended for mounting on round straight aluminum or fluted poles, paired with DB bases.  
Arms to be mounted over an open top pole.

**DELIVERED LUMENS – POST TOP NO LENS**

# Of LEDs	Nominal Wattage	System Watts	Distribution Type	5K (5000K NOMINAL 70 CRI)					4K (4000K NOMINAL 70 CRI)					3K (3000K NOMINAL 70 CRI)				
				Lumen	Bug Rating			Efficacy (Lm/W)	Lumen	Bug Rating			Efficacy (Lm/W)	Lumen	Bug Rating			Efficacy (Lm/W)
					B	U	G			B	U	G			B	U	G	
80	25	24.7	2	3216	1	0	1	130	3216	1	0	1	130	3144	1	0	1	127
			3	3233	1	0	1	131	3233	1	0	1	131	3161	1	0	1	128
			4F	3287	1	0	1	133	3287	1	0	1	133	3214	1	0	1	130
			4W	3362	1	0	1	136	3362	1	0	1	136	3287	1	0	1	133
			5QW	3416	2	0	1	138	3416	2	0	1	138	3339	2	0	1	135
	39	38.4	2	4863	1	0	1	127	4863	1	0	1	127	4754	1	0	1	124
			3	4889	1	0	1	127	4889	1	0	1	127	4779	1	0	1	124
			4F	4970	1	0	2	129	4970	1	0	2	129	4859	1	0	2	127
			4W	5083	1	0	2	132	5083	1	0	2	132	4969	1	0	2	129
			5QW	5165	3	0	1	134	5165	3	0	1	134	5049	3	0	1	131
	50	49	2	5790	1	0	1	118	5790	1	0	1	118	5660	1	0	1	116
			3	5820	2	0	2	119	5820	2	0	2	119	5689	2	0	2	116
			4F	5917	1	0	2	121	5917	1	0	2	121	5785	1	0	2	118
			4W	6051	1	0	2	123	6051	1	0	2	123	5916	1	0	2	121
			5QW	6148	3	0	1	125	6148	3	0	1	125	6011	3	0	1	123
	70	68.6	2	7305	2	0	2	106	7305	2	0	2	106	7141	2	0	2	104
			3	7343	2	0	2	107	7343	2	0	2	107	7178	2	0	2	105
			4F	7466	1	0	2	109	7466	1	0	2	109	7298	1	0	2	106
			4W	7635	1	0	2	111	7635	1	0	2	111	7464	1	0	2	109
			5QW	7757	3	0	2	113	7757	3	0	2	113	7584	3	0	2	111
90	89.7	2	8575	2	0	2	96	8575	2	0	2	96	8383	2	0	2	93	
		3	8620	2	0	2	96	8620	2	0	2	96	8427	2	0	2	94	
		4F	8764	1	0	2	98	8764	1	0	2	98	8568	1	0	2	96	
		4W	8963	1	0	2	100	8963	1	0	2	100	8762	1	0	2	98	
		5QW	9106	4	0	2	102	9106	4	0	2	102	8903	4	0	2	99	
110	112	2	11364	2	0	2	101	11364	2	0	2	101	11109	2	0	2	99	
		3	11423	3	0	3	102	11423	3	0	3	102	11167	2	0	2	100	
		4F	11614	2	0	2	104	11614	2	0	2	104	11354	2	0	2	101	
		4W	11878	2	0	2	106	11878	2	0	2	106	11612	2	0	2	104	
		5QW	12068	4	0	2	108	12068	4	0	2	108	11798	4	0	2	105	

**DELIVERED LUMENS – POST TOP AF LENS**

# Of LEDs	Nominal Wattage	System Watts	Distribution Type	5K (5000K NOMINAL 70 CRI)					4K (4000K NOMINAL 70 CRI)					3K (3000K NOMINAL 70 CRI)				
				Lumen	Bug Rating			Efficacy (Lm/W)	Lumen	Bug Rating			Efficacy (Lm/W)	Lumen	Bug Rating			Efficacy (Lm/W)
					B	U	G			B	U	G			B	U	G	
80	25	24.7	2	2461	1	3	2	100	2461	1	3	2	100	2403	1	3	2	97
			3	2409	1	3	2	97	2409	1	3	2	97	2353	1	3	2	95
			4F	2465	1	3	2	99	2465	1	3	2	99	2408	1	3	2	97
			4W	2485	1	3	2	100	2485	1	3	2	100	2426	1	3	2	97
			5QW	2537	2	3	2	102	2537	2	3	2	102	2478	2	3	2	100
	39	38.4	2	3721	1	3	2	97	3721	1	3	2	97	3634	1	3	2	95
			3	3643	1	3	3	95	3643	1	3	3	95	3557	1	3	3	93
			4F	3728	1	3	3	97	3728	1	3	3	97	3640	1	3	3	95
			4W	3757	1	3	3	98	3757	1	3	3	98	3669	1	3	3	96
			5QW	3836	2	3	3	100	3836	2	3	3	100	3747	2	3	3	98
	50	49	2	4430	1	3	3	90	4430	1	3	3	90	4326	1	3	2	88
			3	4337	2	3	3	89	4337	2	3	3	89	4235	2	3	3	86
			4F	4438	1	3	3	91	4438	1	3	3	91	4334	1	3	3	88
			4W	4473	1	3	3	91	4473	1	3	3	91	4368	1	3	3	89
			5QW	4567	3	3	3	93	4567	3	3	3	93	4460	3	3	3	91
	70	68.6	2	5589	2	3	3	81	5589	2	3	3	81	5458	2	3	3	80
			3	5471	2	3	3	80	5471	2	3	3	80	5343	2	3	3	78
			4F	5599	2	3	3	82	5599	2	3	3	82	5468	2	3	3	80
			4W	5643	2	3	3	82	5643	2	3	3	82	5511	2	3	3	80
			5QW	5762	3	3	3	84	5762	3	3	3	84	5627	3	3	3	82
	90	89.7	2	6561	2	3	3	73	6561	2	3	3	73	6407	2	3	3	71
			3	6423	2	3	3	72	6423	2	3	3	72	6273	2	3	3	70
			4F	6573	2	3	3	73	6573	2	3	3	73	6419	2	3	3	72
			4W	6624	2	3	4	74	6624	2	3	4	74	6469	2	3	4	72
			5QW	6765	3	3	3	75	6765	3	3	3	75	6606	3	3	3	74
110	112	2	8695	2	3	3	78	8695	2	3	3	78	8491	2	3	3	76	
		3	8512	3	3	4	76	8512	3	3	4	76	8312	3	3	4	74	
		4F	8710	2	3	4	78	8710	2	3	4	78	8506	2	3	4	76	
		4W	8779	2	3	4	78	8779	2	3	4	78	8573	2	3	4	77	
		5QW	8964	3	3	4	80	8964	3	3	4	80	8754	3	3	4	78	

**ELECTRICAL DATA**

# LED's	Nominal Wattage	Input Voltage [Volts]	Oper. Current [Amps]	System Power [Watts]
80	25	120	0.20	24.5
		208	0.12	
		240	0.10	
		277	0.09	
		347	0.07	
		480	0.05	
	39	120	0.32	38.4
		208	0.18	
		240	0.16	
		277	0.14	
		347	0.11	
		480	0.08	
	50	120	0.41	49.0
		208	0.24	
		240	0.20	
		277	0.18	
		347	0.14	
		480	0.10	
	70	120	0.57	68.6
		208	0.33	
		240	0.29	
		277	0.25	
		347	0.20	
		480	0.14	
90	120	0.75	89.7	
	208	0.43		
	240	0.37		
	277	0.32		
	347	0.26		
	480	0.19		
110	120	0.88	106.1	
	208	0.51		
	240	0.44		
	277	0.38		
	347	0.31		
	480	0.22		

**PROJECTED LUMEN MAINTENANCE**

AMBIENT TEMP.	OPERATING HOURS					CALCULATED L70 (HOURS)
	0	25,000	"TM-21-11 36,000"	50,000	100,000	
25°C / 77°F	1.00	0.97	0.96	0.95	0.91	408,000
40°C / 104°F	0.99	0.96	0.95	0.94	0.89	356,000

**TEMPERATURE FACTOR (LATF)**

AMBIENT TEMPERATURE	LUMEN MULTIPLIER	
0°C	32°F	1.03
10°C	50°F	1.01
20°C	68°F	1.00
25°C	77°F	1.00
30°C	86°F	0.99
40°C	104°F	0.98
50°C	122°F	0.97

**MICRO STRIKE LUMEN MULTIPLIER**

CCT	70 CRI	80 CRI
2700K	-	0.841
3000K	0.977	0.861
3500K	-	0.900
4000K	1	0.926
5000K	1	0.937
MONOCHROMATIC AMBER MULTIPLIER		
Amber	0.25	

**STRIKE LUMEN MULTIPLIER**

CCT	70 CRI	80 CRI
2700K	-	0.810
3000K	0.933	0.853
3500K	-	0.894
4000K	1	0.900
5000K	1	0.900
MONOCHROMATIC AMBER MULTIPLIER		
Amber	0.25	

**EPA (FT2) TOTAL**

DESCRIPTION	EPA (FT2) TOTAL
Post Top with shade and lens (PT-4S-DIR-STS-DR)	1.63
Post Top with lens, no shade (PT-4S-DIR-NS-DR)	1.46
Post Top with shade, no lens (PT-4S-DIR-STS-DR-NL)	1.02
Post Top no shade no lens (PT-4S-DIR-NS-DR-NL)	0.77