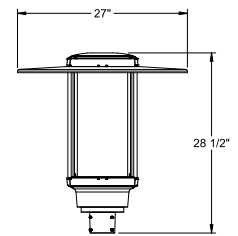


slide



Slide Post Top Mount



FEATURES

- Versatile, transitional designed decorative luminaire, created to yield the ultimate in flexibility in LED post top, pendant and catenary Lighting
- Featuring two different optical technologies, Strike and Micro Strike Optics, which provide the best distribution patterns for retrofit or new construction
- Shade and ring options available to enhance the product design and match any application
- Frosted lens option available based on up light and glare concerns. No lens option is also available as optical chamber is completely sealed.
- Control options including photo control, NX Lighting Controls™, programmed timer-based controls and 7-Pin with networked controls



CONTROL TECHNOLOGY



	WEIGHT	EPA (FT2) TOTAL
SLD2	26 lbs/ 11.79 kgs	0.66-1.52

SPECIFICATIONS

CONSTRUCTION

- Driver housing is made of die-cast aluminum
- Shade shall be made from a one-piece aluminum spinning
- Corrosion resistant, die-cast aluminum housing with 1000 hour powder coat paint finish
- For post top configuration, housing is to be mounted over a 2 3/8" to 3" tenon and held in place with 6 set screws
- External hardware is stainless steel
- Frosted lenses are made from a durable acrylic material

OPTICS

- Micro Strike Optics (80L LED count) maximize uniformity in applications and come standard with mid-power LEDs which evenly illuminate the entire luminous surface area to provide a low glare appearance. Catalog logic found on page 2
- Strike Optics (18L LED count) provide best in class distributions and maximum pole spacing in new applications with high powered LEDs. Strike optics are held in place with a polycarbonate bezel to mimic the appearance of the Micro Strike Optics so both solutions can be combined on the same application. Catalog logic found on page 3
- Both optics maximize target zone illumination with minimal losses at the house-side, reducing light trespass issues. Additional backlight control shields can be added for further reduction of illumination behind the pole
- One-piece silicone gasket ensures a weatherproof seal
- No lens configurations are full cutoff with zero up-light
- All optics are field and factory rotatable
- Listed to UL1598 and CSA22.2 #250.0-24 for wet locations and 40C ambient temperatures

ELECTRICAL

- Universal 120-277 VAC or 347-480 VAC input voltage, 50/60 Hz
- Ambient operating temperature -40°C to 40°C
- Drivers have greater than 90% power factor and less than 20% THD
- LED drivers have output power over-voltage, over-current protection, and short circuit protection with auto recovery
- Field replaceable surge protection device provides 20kA protection meeting ANSI/ IEEE C62.41.2 Category C High and Surge Location Category C3; Automatically takes fixture off-line for protection when device is compromised

CONTROLS

- 0- 10V Dimming Drivers are standard and dimming leads are extended out of the luminaire unless control options require connection to the dimming leads. Must specify if wiring leads are to be greater than the 6" standard
- NX Lighting Controls™ available with in fixture wireless control module, features dimming and occupancy sensor
- The housing is designed for an optional twist lock photo control receptacle

CERTIFICATIONS

- Listed to UL1598 and CSA C22.2#250.0- 24 for wet locations and 40°C ambient temperatures
- 1.5 G rated for ANSI C136.31 high vibration applications
- Luminaire light engine is IP65 rated
- Meets IDA recommendations using 3K CCT or warmer, with no lens and with shade option.
- This product meets federal procurement law requirements under the Buy American Act (FAR 52.225-9) and Trade Agreements Act (FAR 52.225-11). [See Buy America\(n\) Solutions](#)

WARRANTY

- 5 year warranty

Slide

DECORATIVE – POST TOP

DATE: _____ LOCATION: _____

TYPE: _____ PROJECT: _____

CATALOG #: _____

ORDERING GUIDE

Example: SLD2-PT-2S-AF-80L-25-4K7-2-UNV-BLS

CATALOG #

Series	Mounting	Style	Lens	# LED's - Wattage	CCT-CRI	Distribution	Rotation	Voltage
SLD2	PT Post Top Mount 2-3/8" to 3" tenon	2S 2 Strut	AF Acrylic Frosted	80L Only	AM** Amber Monochromatic	80L Only	Blank Blank for no rotation	UNV (120-277VAC)
		4S 4 Strut	AC Acrylic Clear	80L-25	AP* Amber Phosphor Converted	2 Type 2	L* Optic rotation left	347V
		2SS 2 Short Struts	NL No Lens	80L-39	27K8 2700K 80CRI	3 Type 3	R* Optic rotation right	480V
		4SS 4 Short Struts		80L-50	3K7 3000K 70 CRI	4W Type 4 Wide		
				80L-70	3K8 3000K 80CRI	4F Type 4 Forward		
				80L-90	35K8 3500K 80CRI	5QW Type 5 Square Wide		
				80L-110	4K7 4000K 70CRI	18L Only	*Not available with any type 5 distribution	
				18L Only	4K8 4000K 80CRI	2 Type 2		
				18L-25	5K7 5000K 70CRI	3 Type 3		
				18L-39	5K8 5000K 80CRI	4W Type 4 Wide		
				18L-50		4F Type 4 Forward		
				18L-70		5QW Type 5 Square Wide		

Options	Shade Options	Decorative Options	Networked Controls	Stand Alone Sensors	Photocontrol	Programmed Controls
BC Backlight Control	CTS Curved Shade	DR 3 Decorative Rings	NXW* NX Networked Wireless Radio Module NXRM2 and Bluetooth Programming, without Sensor	3PR* 3-Pin twist lock	PC Button Photocell	ADD AutoDim Timer Based Dimming
CD Continuous Dimming	STS Sloped Shade			3PR-SC* 3-Pin receptacle with shorting cap		ADT AutoDim Time of Day Dimming
	FTS Flat Shade			3PR-TL* 3-Pin PCR with photocontrol		
	MTS Sloped Shade Modified Top			7PR* 7-Pin receptacle		
	NS No Shade		* only on post top	7PR-SC* 7-Pin receptacle with shorting cap		
				* only on post top		

Control Accessories	Colors
WIR-RME-L On-fixture Module (7-pin or 5-pin), On / Off / Dim, Daylight Sensor with wiSCAPE Radio, 110–480VAC	BLS Black Gloss Smooth
NXOFM On-fixture Module (7-pin), On / Off / Dim, Daylight Sensor with NX Radio and Bluetooth® Radio, 120–480VAC	BLT Black Matte Textured
	DBS Dark Bronze Gloss Smooth
	DBT Dark Bronze Matte Textured
	GTT Graphite Matte Textured
	LGS Light Gray Gloss Smooth
	LGT Light Gray Matte Textured
	PSS Platinum Silver Gloss Smooth
VGT Verde Green Matte Textured	
WHS White Gloss Smooth	
WHT White Matte Textured	
Color Options	
CC Custom Color	
CLA* Clear Anodized Finish	
	* Recommended for harsh environments, salt spray 3,000 hrs rated

Slide

DECORATIVE – POST TOP

OUTDOOR LIGHTING CONTROLS OPTIONS | CONTROLS FUNCTIONALITY



	Control Option Ordering Logic & Description	Control Option Functionality									Control Option Components	
		Networkable	Grouping	Scheduling	Occupancy/Motion	Daylight Harvesting	0-10V Dimming	On/Off Control	Bluetooth App Programming	Sensor Height		
NX Wireless	NXOFMIRID-UNV	✓	✓	✓	Paired with external control	✓	✓	✓	✓	-		NXOFMIRID-UNV
	NXW	✓	✓	✓	-	-	✓	✓	✓	-		NXRM2-H
LightGRID+	WIR-RME-L	✓	-	✓	-	-	✓	✓	Gateway	-		WIR-RME-L

DEFAULT SETTINGS

Occupancy Sensor	Enabled
Occupancy Sensor Sensitivity	7
Occupancy Sensor Timeout	15 Minutes
Occupied Dim Level	100%
Unoccupied Dim Level	0%
Daylight Sensor	Disabled
Bluetooth	Enabled
2.4GHz Wireless Mesh	On
Passcode Factory Passcode: Curr3nt!	Enabled

Occupancy Sensor	Enabled
Occupancy Sensor Sensitivity	7
Occupancy Sensor Timeout	8 Minutes
Occupied Dim Level	100%
Unoccupied Dim Level	50%
Daylight Sensor	Disabled

NX LIGHTING CONTROLS FREE APP | CONTROLS TECH SUPPORT 800-888-8006 (7:00 AM - 7:00 PM)



The NX Lighting Controls App is free to use mobile application for programming both NX Lighting Controls System or Standalone Bluetooth Sensors. The mobile app allows you to configure devices, discover and setup wireless enable luminaires and program NX system settings.

Apple App: <https://apps.apple.com/us/app/nx-lighting-controls/id962112904>

Google Play: https://play.google.com/store/apps/details?id=io.cordova.NXBTR&hl=en_US&gl=US



Apple App



Google Play

OUTDOOR LIGHTING CONTROLS OPTIONS | CONTROLS FUNCTIONALITY

	Control Option Ordering Logic & Description	Control Option Functionality									Control Option Components	
		Networkable	Grouping	Scheduling	Occupancy/Motion	Daylight Harvesting	0-10V Dimming	On/Off Control	Bluetooth App Programming	Sensor Height		
Independent	ADD AutoDIM Timer Based Dimming	-	-	✓	-	-	-	✓	-	-	ADD	
	ADT AutoDIM Time of Day Dimming	-	-	✓	-	-	-	✓	-	-	ADT	
	7PR 7-Pin Receptacle	-	-	Paired with external control	-	Paired with external control	-	Paired with external control	-	-	7PR	
	7PR-SC 7-Pin Receptacle with shorting cap	-	-	-	-	-	-	-	-	-		7PR-SC
	3PR 3-Pin twist lock	-	-	-	-	-	-	Paired with external control	-	-	3PR	
	3PR-SC 3-Pin Receptacle with shorting cap	-	-	-	-	-	-	-	-	-		3PR-SC
	3PR-TL 3-Pin with photocontrol	-	-	-	-	✓	-	✓	-	-		3PR-TL

PROGRAMMED CONTROLS

ADD-AutoDim Timer Based Options

- Light delay options from 1-9 hours after the light is turned on to dim the light by 10-100%. To return the luminaire to its original light level there are dim return options from 1-9 hours after the light has been dimmed previously.

EX: ADD-6-5-R6

ADD CONTROL OPTIONS	CONFIGURATIONS CHOICES	EXAMPLE CHOICE PICKED
Auto-Dim Options	1-9 Hours	6 - Delay 6 hours
Auto-Dim Brightness	10-100% Brightness	5 - Dim to 50% brightness
Auto-Dim Return	Delay 0-9 Hours	R6 - Return to full output after 6 hours

ADT-AutoDim Time of Day Based Option

- Light delay options from 1AM-9PM after the light is turned on to dim the light by 10-100%. To return the luminaire to its original light level there are dim return options from 1AM-9PM after the light has been dimmed previously.

EX: ADT-6-5-R6

ADD CONTROL OPTIONS	CONFIGURATIONS CHOICES	EXAMPLE CHOICE PICKED
Auto-Dim Options	12-3 AM and 6-11 PM	6 - Dim at 6PM
Auto-Dim Brightness	10-100% Brightness	5 - Dim to 50%
Auto-Dim Return	12-6 AM and 9-11P	R6 - Return to full output at 6AM

Slide

DECORATIVE – POST TOP

DIMENSIONS

POST TOP - NO SHADE (N5)				
	SLD2-PT-2S-NL-NS	SLD2-PT-2S-NL-NS-DR	SLD2-PT-4S-NL-NS	SLD2-PT-4S-NL-NS-DR
	SLD2-PT-2S-AF-NS	SLD2-PT-2S-AF-NS-DR	SLD2-PT-4S-AF-NS	SLD2-PT-4S-AF-NS-DR
POST TOP - FLAT (FTS)				
	SLD2-PT-2S-NL-FTS-DR	SLD2-PT-2S-NL-FTS	SLD2-PT-4S-NL-FTS	SLD2-PT-4S-NL-FTS-DR
	SLD2-PT-2S-AF-FTS-DR	SLD2-PT-2S-AF-FTS	SLD2-PT-4S-AF-FTS	SLD2-PT-4S-AF-FTS-DR

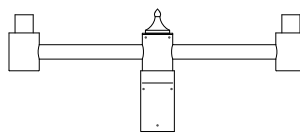
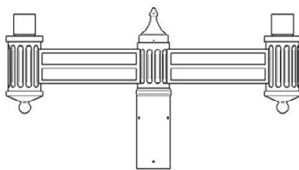
Slide

DECORATIVE – POST TOP

DIMENSIONS

POST TOP - CURVE (CTS)				
	SLD2-PT-2S-NL-CTS	SLD2-PT-2S-NL-CTS-DR	SLD2-PT-4S-NL-CTS	SLD2-PT-4S-NL-CTS-DR
	SLD2-PT-2S-AF-CTS	SLD2-PT-2S-AF-CTS-DR	SLD2-PT-4S-AF-CTS	SLD2-PT-4S-AF-CTS-DR
POST TOP - STRAIGHT (STS)				
	SLD2-PT-2S-NL-STS	SLD2-PT-2S-NL-STS-DR	SLD2-PT-4S-NL-STS	SLD2-PT-4S-NL-STS-DR
	SLD2-PT-2S-AF-STS	SLD2-PT-2S-AF-STS-DR	SLD2-PT-4S-AF-STS	SLD2-PT-4S-AF-STS-DR

ARMS



GRANDVILLE ARM

Recommended for mounting on round straight aluminum or fluted poles, paired with DB bases.
Arms to be mounted over an open top pole.

MICRO STRIKE DELIVERED LUMENS – POST TOP NO LENS

# Of LEDs	Nominal Wattage	System Watts	Distribution Type	5K (5000K NOMINAL 70 CRI)					4K (4000K NOMINAL 70 CRI)					3K (3000K NOMINAL 70 CRI)				
				Lumen	Bug Rating			Efficacy (Lm/W)	Lumen	Bug Rating			Efficacy (Lm/W)	Lumen	Bug Rating			Efficacy (Lm/W)
					B	U	G			B	U	G			B	U	G	
80	25	24.7	2	3216	1	0	1	130	3216	1	0	1	130	3144	1	0	1	127
			3	3233	1	0	1	131	3233	1	0	1	131	3161	1	0	1	128
			4F	3287	1	0	1	133	3287	1	0	1	133	3214	1	0	1	130
			4W	3362	1	0	1	136	3362	1	0	1	136	3287	1	0	1	133
			5QW	3416	2	0	1	138	3416	2	0	1	138	3339	2	0	1	135
	39	38.4	2	4863	1	0	1	127	4863	1	0	1	127	4754	1	0	1	124
			3	4889	1	0	1	127	4889	1	0	1	127	4779	1	0	1	124
			4F	4970	1	0	2	129	4970	1	0	2	129	4859	1	0	2	127
			4W	5083	1	0	2	132	5083	1	0	2	132	4969	1	0	2	129
			5QW	5165	3	0	1	134	5165	3	0	1	134	5049	3	0	1	131
	50	49	2	5790	1	0	1	118	5790	1	0	1	118	5660	1	0	1	116
			3	5820	2	0	2	119	5820	2	0	2	119	5689	2	0	2	116
			4F	5917	1	0	2	121	5917	1	0	2	121	5785	1	0	2	118
			4W	6051	1	0	2	123	6051	1	0	2	123	5916	1	0	2	121
			5QW	6148	3	0	1	125	6148	3	0	1	125	6011	3	0	1	123
	70	68.6	2	7305	2	0	2	106	7305	2	0	2	106	7141	2	0	2	104
			3	7343	2	0	2	107	7343	2	0	2	107	7178	2	0	2	105
			4F	7466	1	0	2	109	7466	1	0	2	109	7298	1	0	2	106
			4W	7635	1	0	2	111	7635	1	0	2	111	7464	1	0	2	109
			5QW	7757	3	0	2	113	7757	3	0	2	113	7584	3	0	2	111
	90	89.7	2	8575	2	0	2	96	8575	2	0	2	96	8383	2	0	2	93
			3	8620	2	0	2	96	8620	2	0	2	96	8427	2	0	2	94
			4F	8764	1	0	2	98	8764	1	0	2	98	8568	1	0	2	96
			4W	8963	1	0	2	100	8963	1	0	2	100	8762	1	0	2	98
			5QW	9106	4	0	2	102	9106	4	0	2	102	8903	4	0	2	99
110	112	2	11364	2	0	2	101	11364	2	0	2	101	11109	2	0	2	99	
		3	11423	3	0	3	102	11423	3	0	3	102	11167	2	0	2	100	
		4F	11614	2	0	2	104	11614	2	0	2	104	11354	2	0	2	101	
		4W	11878	2	0	2	106	11878	2	0	2	106	11612	2	0	2	104	
		5QW	12068	4	0	2	108	12068	4	0	2	108	11798	4	0	2	105	

MICRO STRIKE DELIVERED LUMENS – POST TOP AF LENS

# Of LEDs	Nominal Wattage	System Watts	Distribution Type	5K (5000K NOMINAL 70 CRI)					4K (4000K NOMINAL 70 CRI)					3K (3000K NOMINAL 70 CRI)				
				Lumen	Bug Rating			Efficacy (Lm/W)	Lumen	Bug Rating			Efficacy (Lm/W)	Lumen	Bug Rating			Efficacy (Lm/W)
					B	U	G			B	U	G			B	U	G	
80	25	24.7	2	2461	1	3	2	100	2461	1	3	2	100	2403	1	3	2	97
			3	2409	1	3	2	97	2409	1	3	2	97	2353	1	3	2	95
			4F	2465	1	3	2	99	2465	1	3	2	99	2408	1	3	2	97
			4W	2485	1	3	2	100	2485	1	3	2	100	2426	1	3	2	97
			5QW	2537	2	3	2	102	2537	2	3	2	102	2478	2	3	2	100
	39	38.4	2	3721	1	3	2	97	3721	1	3	2	97	3634	1	3	2	95
			3	3643	1	3	3	95	3643	1	3	3	95	3557	1	3	3	93
			4F	3728	1	3	3	97	3728	1	3	3	97	3640	1	3	3	95
			4W	3757	1	3	3	98	3757	1	3	3	98	3669	1	3	3	96
			5QW	3836	2	3	3	100	3836	2	3	3	100	3747	2	3	3	98
	50	49	2	4430	1	3	3	90	4430	1	3	3	90	4326	1	3	2	88
			3	4337	2	3	3	89	4337	2	3	3	89	4235	2	3	3	86
			4F	4438	1	3	3	91	4438	1	3	3	91	4334	1	3	3	88
			4W	4473	1	3	3	91	4473	1	3	3	91	4368	1	3	3	89
			5QW	4567	3	3	3	93	4567	3	3	3	93	4460	3	3	3	91
	70	68.6	2	5589	2	3	3	81	5589	2	3	3	81	5458	2	3	3	80
			3	5471	2	3	3	80	5471	2	3	3	80	5343	2	3	3	78
			4F	5599	2	3	3	82	5599	2	3	3	82	5468	2	3	3	80
			4W	5643	2	3	3	82	5643	2	3	3	82	5511	2	3	3	80
			5QW	5762	3	3	3	84	5762	3	3	3	84	5627	3	3	3	82
	90	89.7	2	6561	2	3	3	73	6561	2	3	3	73	6407	2	3	3	71
			3	6423	2	3	3	72	6423	2	3	3	72	6273	2	3	3	70
			4F	6573	2	3	3	73	6573	2	3	3	73	6419	2	3	3	72
			4W	6624	2	3	4	74	6624	2	3	4	74	6469	2	3	4	72
			5QW	6765	3	3	3	75	6765	3	3	3	75	6606	3	3	3	74
110	112	2	8695	2	3	3	78	8695	2	3	3	78	8491	2	3	3	76	
		3	8512	3	3	4	76	8512	3	3	4	76	8312	3	3	4	74	
		4F	8710	2	3	4	78	8710	2	3	4	78	8506	2	3	4	76	
		4W	8779	2	3	4	78	8779	2	3	4	78	8573	2	3	4	77	
		5QW	8964	3	3	4	80	8964	3	3	4	80	8754	3	3	4	78	

STRIKE DELIVERED LUMENS – PENDANT / CATENARY

# Of LEDs	Nominal Wattage	System Watts	Distribution Type	5K (5000K NOMINAL 70 CRI)				4K (4000K NOMINAL 70 CRI)				3K (3000K NOMINAL 70 CRI)						
				Lumen	Bug Rating			Efficacy (Lm/W)	Lumen	Bug Rating			Efficacy (Lm/W)	Lumen	Bug Rating			Efficacy (Lm/W)
					B	U	G			B	U	G			B	U	G	
18	25	28	2	3100	1	1	1	111	3100	1	1	1	111	2870	1	1	1	103
			3	3161	1	2	1	113	3161	1	2	1	113	2927	1	2	1	105
			4W	3237	1	2	2	116	3237	1	2	2	116	2997	1	2	2	107
			5QM	3304	2	1	0	118	3304	2	1	0	118	3059	2	1	0	109
			5QN	3170	2	1	0	113	3170	2	1	0	113	2935	2	1	0	105
			5QW	3131	2	2	2	112	3131	2	2	2	112	2899	2	2	2	104
			5RW	3188	2	1	2	114	3188	2	1	2	114	2952	2	1	2	105
			CL	3116	1	2	1	111	3116	1	2	1	111	2885	1	2	1	103
			CR	3116	1	2	1	111	3116	1	2	1	111	2885	1	2	1	103
	FR	3152	0	1	0	113	3152	0	1	0	113	2919	0	1	0	104		
	39	45.1	2	4501	1	2	1	100	4501	1	2	1	100	4167	1	2	1	92
			3	4590	1	2	2	102	4590	1	2	2	102	4250	1	2	2	94
			4W	4699	1	2	2	104	4699	1	2	2	104	4351	1	2	2	96
			5QM	4797	2	1	1	106	4797	2	1	1	106	4441	2	1	1	98
			5QN	4602	2	1	0	102	4602	2	1	0	102	4261	2	1	0	94
			5QW	4546	3	2	2	101	4546	3	2	2	101	4210	3	2	2	93
			5RW	4629	3	1	3	103	4629	3	1	3	103	4286	3	1	3	95
			CL	4524	1	2	2	100	4524	1	2	2	100	4189	1	2	1	93
			CR	4524	1	2	2	100	4524	1	2	2	100	4189	1	2	1	93
	FR	4577	1	1	1	101	4577	1	1	1	101	4238	1	1	1	94		
	50	57.5	2	5443	1	2	1	95	5443	1	2	1	95	5040	1	2	1	88
			3	5551	1	2	2	97	5551	1	2	2	97	5140	1	2	2	89
			4W	5683	1	2	3	99	5683	1	2	3	99	5262	1	2	2	92
			5QM	5801	2	1	1	101	5801	2	1	1	101	5371	2	1	1	93
			5QN	5566	2	2	0	97	5566	2	2	0	97	5153	2	2	0	90
			5QW	5498	3	2	2	96	5498	3	2	2	96	5091	3	2	2	89
			5RW	5598	3	1	3	97	5598	3	1	3	97	5184	3	1	3	90
			CL	5472	1	2	2	95	5472	1	2	2	95	5066	1	2	2	88
			CR	5472	1	2	2	95	5472	1	2	2	95	5066	1	2	2	88
	FR	5535	1	1	1	96	5535	1	1	1	96	5125	1	1	1	89		
	70	62.4	2	6013	1	2	1	96	6013	1	2	1	96	5568	1	2	1	89
			3	6133	1	2	2	98	6133	1	2	2	98	5679	1	2	2	91
			4W	6279	1	2	3	101	6279	1	2	3	101	5814	1	2	3	93
			5QM	6409	3	1	1	103	6409	3	1	1	103	5934	2	1	1	95
			5QN	6149	2	2	0	99	6149	2	2	0	99	5693	2	2	0	91
			5QW	6074	3	2	2	97	6074	3	2	2	97	5625	3	2	2	90
5RW			6185	3	1	3	99	6185	3	1	3	99	5727	3	1	3	92	
CL			6045	1	2	2	97	6045	1	2	2	97	5597	1	2	2	90	
CR			6045	1	2	2	97	6045	1	2	2	97	5597	1	2	2	90	
FR	6115	1	1	1	98	6115	1	1	1	98	5662	1	1	1	91			

ELECTRICAL DATA

# LED's	Nominal Wattage	Input Voltage [Volts]	Oper. Current [Amps]	System Power [Watts]
80	25	120	0.20	24.5
		208	0.12	
		240	0.10	
		277	0.09	
		347	0.07	
		480	0.05	
	39	120	0.32	38.4
		208	0.18	
		240	0.16	
		277	0.14	
		347	0.11	
		480	0.08	
	50	120	0.41	49.0
		208	0.24	
		240	0.20	
		277	0.18	
		347	0.14	
		480	0.10	
	70	120	0.57	68.6
		208	0.33	
		240	0.29	
		277	0.25	
		347	0.20	
		480	0.14	
90	120	0.75	89.7	
	208	0.43		
	240	0.37		
	277	0.32		
	347	0.26		
	480	0.19		
110	120	0.88	106.1	
	208	0.51		
	240	0.44		
	277	0.38		
	347	0.31		
	480	0.22		

PROJECTED LUMEN MAINTENANCE

AMBIENT TEMP.	OPERATING HOURS					CALCULATED L70 (HOURS)
	0	25,000	*TM-21-11 36,000	50,000	100,000	
25°C / 77°F	1.00	0.97	0.96	0.95	0.91	408,000
40°C / 104°F	0.99	0.96	0.95	0.94	0.89	356,000

TEMPERATURE FACTOR (LATF)

AMBIENT TEMPERATURE	LUMEN MULTIPLIER	
0°C	32°F	1.03
10°C	50°F	1.01
20°C	68°F	1.00
25°C	77°F	1.00
30°C	86°F	0.99
40°C	104°F	0.98
50°C	122°F	0.97

MICRO STRIKE LUMEN MULTIPLIER

CCT	70 CRI	80 CRI
2700K	-	0.841
3000K	0.977	0.861
3500K	-	0.900
4000K	1	0.926
5000K	1	0.937
MONOCHROMATIC AMBER MULTIPLIER		
Amber	0.25	

STRIKE LUMEN MULTIPLIER

CCT	70 CRI	80 CRI
2700K	-	0.810
3000K	0.933	0.853
3500K	-	0.894
4000K	1	0.900
5000K	1	0.900
MONOCHROMATIC AMBER MULTIPLIER		
Amber	0.25	

EPA (FT2) TOTAL

DESCRIPTION	EPA (FT2) TOTAL
Post Top with shade and lens (PT-4S-DIR-STS-DR)	1.63
Post Top with lens, no shade (PT-4S-DIR-NS-DR)	1.46
Post Top with shade, no lens (PT-4S-DIR-STS-DR-NL)	1.02
Post Top no shade no lens (PT-4S-DIR-NS-DR-NL)	0.77