

PRC Series

Flexible Design, Trusted Quality

Engineered for versatility and performance, with **IP65, NSF, NEMA 4X and Wet Location**. It's ready for anything from industrial spaces to food processing facilities.

Selectable Lumen, Color Temperatures and **NEWLY added selectable optics control** – Switch between wide, medium and narrow with ease.

Rated for **high temperature** with a LED and **driver design life over 50,000 hours at maximum ambient** — Ensuring long-term reliability and reduce maintenance.



CONSTRUCTION

Housing:	Die-cast Aluminum
Lens:	Clear Polycarbonate
Paint:	Powder coat painted housing (No glass in housing or lenses)
Weight:	6.5–9.5lbs (2.95–4.30kg)
Optical Assembly:	Optional polycarbonate refractor, drop lens, or aluminum reflector

OPTICAL SYSTEM

Lumens:	Size 1: Selectable 15,000 / 18,000 / 24,000 Size 2: Selectable 25,000 / 30,000 / 38,000
Wattage:	100–240W
Efficacy:	145–178LPW
CCT:	Selectable 3500K / 4000K / 5000K
CRI:	80
Glare Rating:	UGR<28
Optics:	Selectable Optics 100°/80°/60°

ELECTRICAL

Input Voltage:	120–277V or 120–347V
Input Frequency:	50/60Hz
Power Factor (PF)*:	>0.9*
Total Harmonic Distortion (THD)*:	<20%*
EMI:	FCC CFR Title 47 Part 15, Class A
Surge Protection:	6kV surge protection

* PF and THD may vary with options

CONTROLS

Dimming: 0–10V Dimming to 10%

Sensors: Field installable Sensor

LUMINAIRE AMBIENT TEMPERATURE

TYPE	TEMPERATURE RATE
OPERATING TEMP.	Size 1: –40°C to 55°C Size 2: –40°C to 50°C
STORAGE TEMP.	–40°C to 70°C

For Sensor ambient temps see specifications on Page 7

LUMEN MAINTENANCE

LXX (10K) @ HOURS	50,000 HR
L70	

MOUNTING

- **Typical Mounting:** ½" NPT hook included. Wall mount, snap hook, ring hook and ½" to ¾" NPT converter available as accessories.
- **Cord:** 6ft cord included (pre-installed)
- Optional sensor remote accessory allows daylight and dimming sensor capabilities to be enabled and programmed

ADDITIONAL NOTES

- UL 1598 to US and Canadian standards
- Suitable for wet locations
- IP65 and NSF Splash Zone rated
- NEMA 250 Type 4X rated

DESIGN LIFE & WARRANTY

- **Current's Limited 5-year Warranty:**
See Product Warranties section at led.com/resources



Ordering Information

PRC **1** **08** **SO** **QV** **ST** **A** **Q**

PRODUCT ID	VOLTAGE	SIZE/SELECTABLE LUMENS	SELECTABLE CCT/CRI	SELECTABLE OPTICS	CONTROLS	MOUNTING	CORD	PLUG	FINISH
PRC	1 = 120-347V	1 = 15/18/24K Lumen (100/120/150 Watts) 2 = 25/30/38K Lumen (150/200/240 Watts)	08 = 3500/4000/5000K (80CRI)	SO = Optics (100°/80°/60°)	QV = 0-10V Dimming <i>FIELD INSTALLABLE SENSOR AVAILABLE. PLEASE SEE ACCESSORY GUIDE BELOW.</i>	ST = Hook <i>ADDITIONAL MOUNTING ACCESSORIES AVAILABLE. PLEASE SEE ACCESSORY GUIDE BELOW.</i>	A = 6ft cord	Q = None	B = Black W = White

Stock Ordering Information

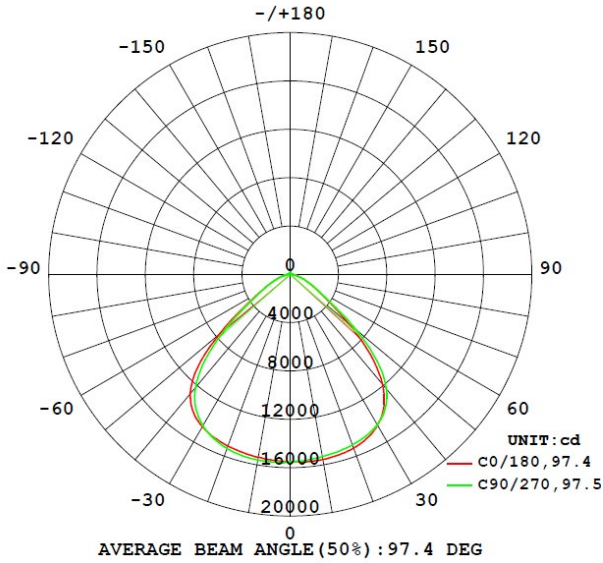
SKU	CAT LOGIC
93318264	PRC1108SOQVSTAQB
93318263	PRC1108SOQVSTAQW
93318266	PRC1208SOQVSTAQB
93318265	PRC1208SOQVSTAQW

Cat-Logic	Wattage Setting	Lumen	LPW	CCT
PRC11 60° Optics Setting	150	21900	146	3500
		23200	162	4000
		22200	150	5000
	120	18100	155	3500
		18800	168	4000
		18400	158	5000
	100	15200	160	3500
		16000	170	4000
		15500	163	5000
PRC11 80° Optics Setting	150	23200	162	3500
		24200	175	4000
		23800	168	5000
	120	18700	168	3500
		19300	178	4000
		19000	170	5000
	100	15800	170	3500
		16300	178	4000
		16000	173	5000
PRC11 100° Optics Setting	150	21900	146	3500
		23200	162	4000
		22200	150	5000
	120	18100	155	3500
		18800	168	4000
		18400	158	5000
	100	15200	160	3500
		16000	170	4000
		15500	163	5000

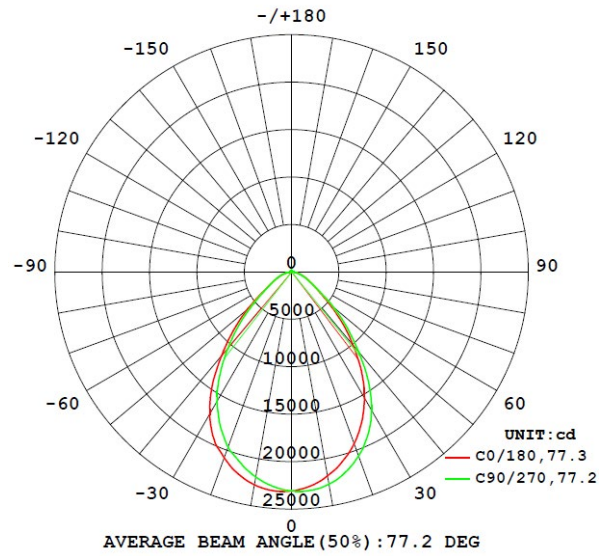
Cat-Logic	Wattage Setting	Lumen	LPW	CCT
PRC12 60° Optics Setting	240	34600	145	3500
		36500	160	4000
		35200	149	5000
	200	30000	150	3500
		32000	165	4000
		30500	153	5000
	150	24000	160	3500
		25000	170	4000
		24500	163	5000
PRC12 80° Optics Setting	240	36200	162	3500
		38500	175	4000
		37800	167	5000
	200	32000	164	3500
		33000	175	4000
		32200	166	5000
	150	24800	170	3500
		25300	178	4000
		25000	172	5000
PRC12 100° Optics Setting	240	34200	145	3500
		36200	160	4000
		35600	149	5000
	200	30000	150	3500
		32000	165	4000
		30500	153	5000
	150	24000	160	3500
		25000	170	4000
		24500	163	5000

PHOTOMETRY

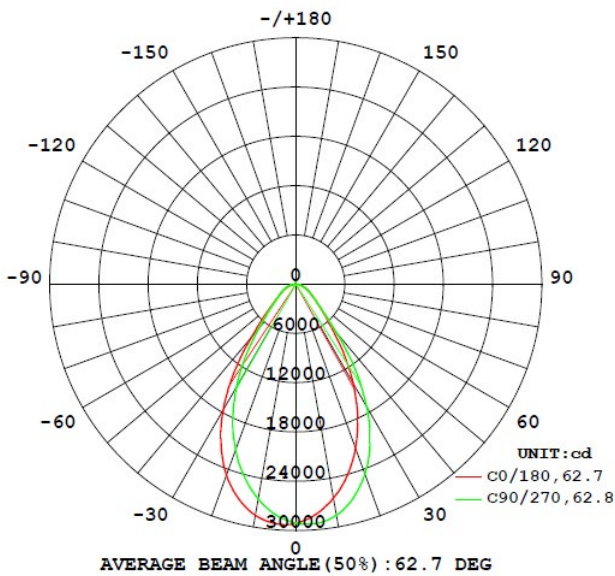
100° Optics Setting



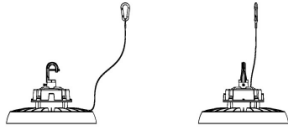



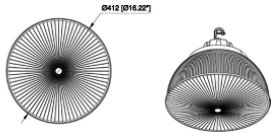

80° Optics Setting



60° Optics Setting



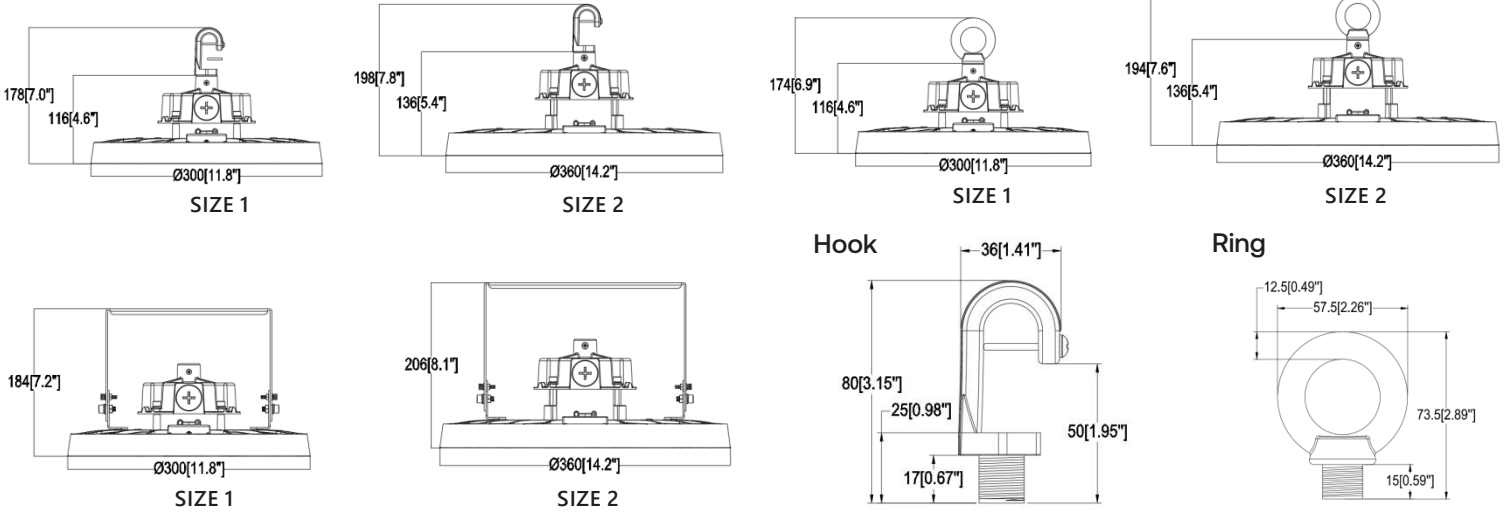
ACCESSORIES

ACCESSORIES (OPTIONAL)	IMAGE	DESCRIPTION	PART #	DIMENSIONS/NOTES
Safety Tether		IRH-TLR	93130251	Cable length: 6'
Wire Guard		Size 1: IRH-1-WG	93318627	Size 1: H 1.89"; Dia 10.25" Size 2: H 2.09"; Dia 12.4" Min Order Qty = 10
		Size 2: IRH-2-WG	93318628	
Full Wire Guard		Size 1: IRH-1-FWG	93318629	Size 1: H 7.86" Dia 17.88" Size 2: H 8.15" Dia 17.88"
		Size 2: IRH-2-FWG	93318630	
Polycarbonate Refractor		Size 1: IRH-1-PC16	93318621	Size 1 & 2: H 6.3" Dia 16" Lumen Output Multiplier: .98
		Size 2: IRH-2-PC16	93318622	
Polycarbonate Drop Lens		Size 1: IRH-1-PCL	93318623	Drop lens adds: 100W: H 3.6cm (1.4 in.) 150W: H 3.6cm (1.4 in.) 200-240W: H 4.1cm (1.6 in.) Lumen Output Multiplier: .93
		Size 2: IRH-2-PCL	93318624	
Aluminum Reflector		Size 1: IRH-1-AL16	93318625	Size 1: H 6.45"; Dia 16" Size 2: H 7.15"; Dia 18" Lumen Output Multiplier: .90
		Size 2: IRH-2-AL18	93318626	

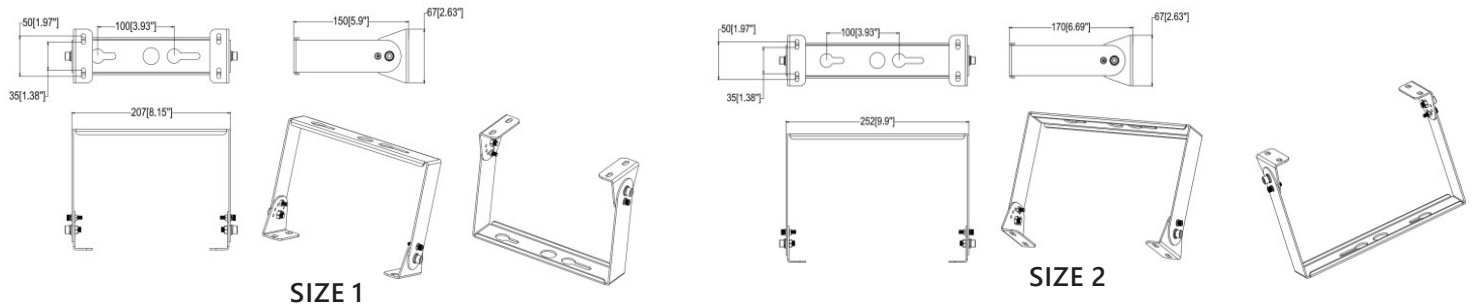
ACCESSORIES

Accessories (Optional)	Image	Description	Part #	Dimensions/Notes
Wall Mount Bracket*		Size 1 Black: IRH-1-YM-BLK	93159855G	Total Height of assembly from top of bracket to bottom of fixture: Size 1: H 6.3" Size 2: H 7.1" 200 –240W: 22.8cm (9 in.) * Pendant mount slot on yoke is 1/2". Use PRC-YOKE-ADPT to convert to 3/4"
		Size 1 White: IRH-1-YM-WHT	93161797	
		Size 2 Black: IRH-2-YM-BLK	93159856G	
		Size 2 White: IRH-2-YM-WHT	93130248	
Snaphook		Sizes 1 & 2	93130250	Dimensions Notes: Snaphook for 3/4" Conduit
PIR Occupancy Sensor		Sensor: HB03DPR	93161798	Notes: 1. Easy plug-and-play install to center face of fixture; maintains IP65 rating 2. Sensor requires remote if programming is desired 3. HB03DPR sensor is not compatible with IRH-ELL40 emergency battery
		Remote: HB03DPR-REMOTE	93161799	
Emergency Battery		IRH-ELL40	93161800	H: 10.78"; W: 5.57" Note: IRH-ELL40 emergency battery is not compatible with HBO3DPR sensor
Hook		Black: IRH-HOOK-B	93318612	Hook for 1/2" NPT
		White: IRH-HOOK-W	93318613	
Ring		Black: IRH-RING-B	93318614	Ring for 1/2" NPT
		White: IRH-RING-W	93318615	
NPT converter			93130249	1/2" to 3/4" NPT converter

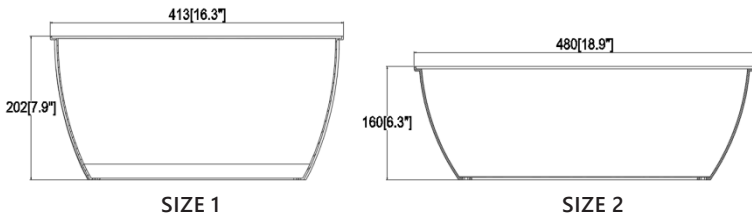
DIMENSIONS



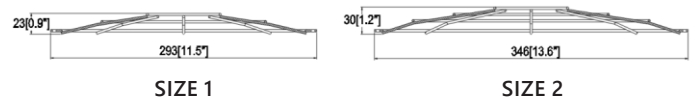
Wall Bracket



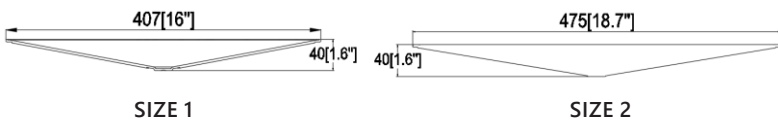
PC Reflector



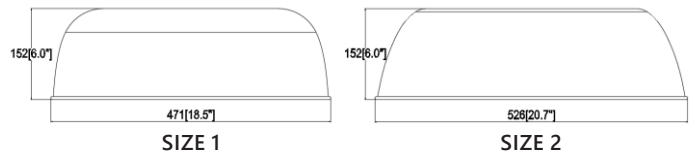
Wire guard – not available on reflector



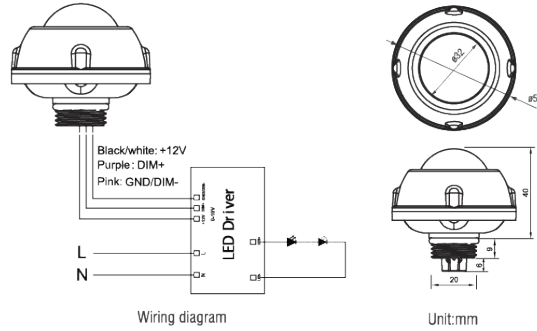
PC Reflector Cover



Aluminum Reflector



HD03DPR MOTION SENSOR ACCESSORY SPECIFICATIONS



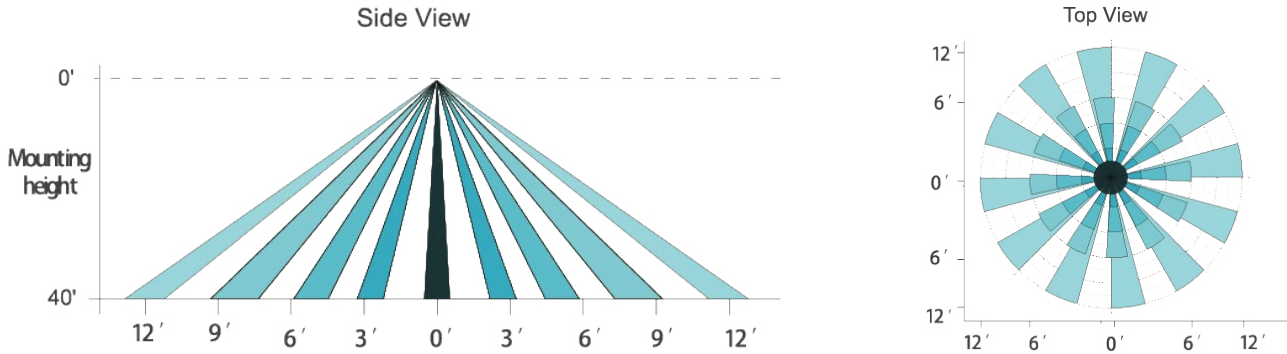
TECHNICAL DATA

Operating Voltage:	12±2V DC
Operating Current	30mA
Output:	DIM 0–10V
Stand-by Power:	<0.5W
Brightness:	0%–100% Quick Setting: 70%/80%/90%/100%
Hold Time:	10s/1min/10min/30min
Daylight Threshold:	10Lux/30Lux/50Lux/100Lux/Disable
Stand-by Time:	1min/30min/60min + ∞
Stand-by Dimming Level:	10%/20%/30%/50%
Detection Angle:	≤120° (wall mounted), 360° (Ceiling mounted)
Mounting Height:	≤ 12m/39.37ft (Ceiling mounted)
Detection Range:	Radius, 2–4m/6.58–13.12ft (Ceiling mounted)
Operating Temperature:	-30°C~+60°C
IP Rating:	IP65 (Mounted on the light fixture)
Warm-up Period	50S

Note: Default setting - Brightness: 100%, Hold time: 1min, Stand-by dimming level: 20%, Stand-by time: 1min, Sensitivity: 100% (non-adjustable) Daylight: Disable.

Detection Coverage

This figure indicates the maximum distance at the highest mounting height with 100% sensitivity.

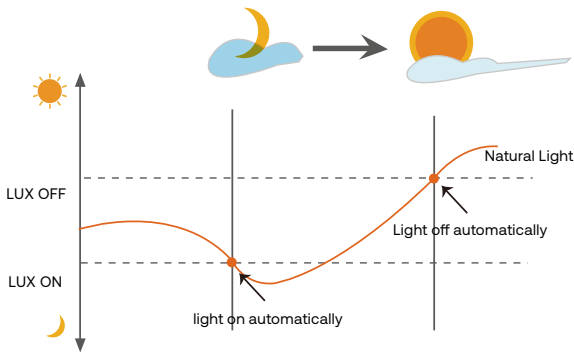


Lux on/off

PRC Sensor is able to differentiate artificial light brightness from natural light after installed inside the fixture, and automatically turn off light when ambient brightness exceeds preset lux level.

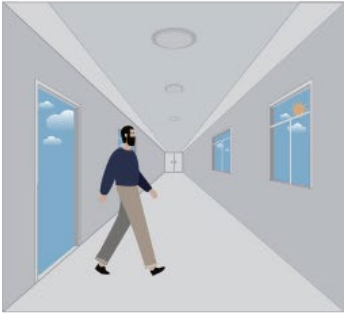
Preconditions to use the Lux-off function:

1. Stand-by time is $+\infty$
2. Stand-by dimming level is on 10%, 20%, 30%, or 50%
3. Daylight threshold is on 10Lux, 30Lux, 50Lux, or 100Lux (About 20% error between actual and reference values)

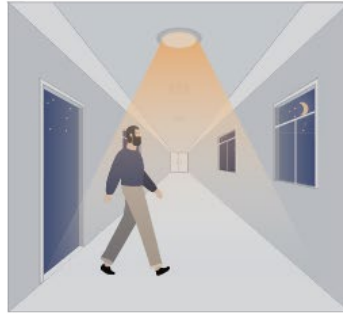


Performance

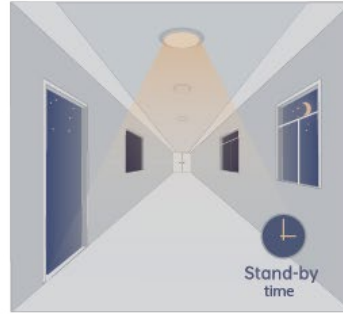
1. AUTOMATIC ON/OFF FUNCTION



With sufficient daylight, even when motion is detected, light will remain OFF.



With insufficient daylight, the sensor turns light ON when motion gets detected.



Light dims to stand-by level if no motion detected after hold time.



Light OFF when ambient lux level is higher than preset lux amount.

2. CORRIDOR FUNCTION, BI-LEVEL DIMMABLE



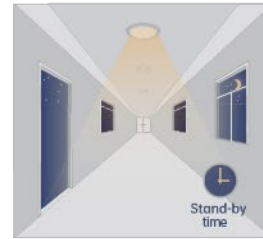
With sufficient daylight, the sensor keeps light OFF even motion gets detected, daylight function is on.



With insufficient daylight, the sensor turns light ON when motion gets detected.



After there's no motion detected, the sensor keeps light ON brightness setting for hold time.

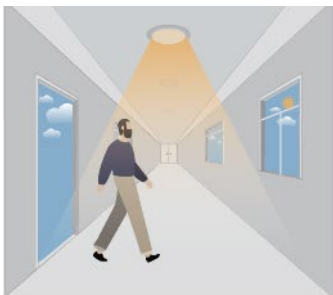


After holdtime, sensor dims light to stand-by dimming level for stand-by time.



The sensor turns OFF light automatically after the stand-by time when there's no motion detected.

3. DAYLIGHT DISABLE



The sensor turns light ON when motion gets detected.



The sensor keeps light ON for hold time after motion leaves.



After hold time, sensor dims light to stand-by dimming level for stand-by time.



The sensor turns OFF light automatically after the stand-by time when there's no motion detected.

HB03DPR-REMOTE



Display Area

Brightness (70%, 80%, 90%, 100%)

Daylight (10%, 30%, 50%, 100%)

Standby Dim (10%, 20%, 30%, 50%)

Hold Time (10s/1min/10min/30min)

Sensitivity (20%, 50%, 75%, 100%)

Standby Time (+ ∞ 1min/30min/60min)

Button Setting Area

On/Off (Long press the "On/Off" button until the brightness indicator light is on (First-row). Press to turn on or turn off the fixture.)

Brightness (Press to adjust dimming level 70%, 80%, 90%, 100%)

Standby Dim (10%, 20%, 30%, 50%)

Send (Press to save settings after each change. The indicator light confirms the save setting.)

Hold Time (Press to adjust hold time 10s/1min/10min/30min.)

Daylight (Long press the button until the daylight indicator light is on press to adjust daylight threshold 10%, 30%, 50%, 100%)

Sensitivity (Press to adjust sensitivity 20%, 50%, 75%, 100%) Note: PIR Motion Sensor have no sensitivity setting, the default 100%.)

Standby Dim (Press to adjust stand-by time + ∞ 1min/30min/60min). Note: "+ ∞" means unlimited stand-by time, and the light control mode is the light control priority mode, otherwise it's the light threshold mode.)

Reset (Press "Reset" button, products with DIP switch will be controlled by DIP switches; Otherwise all the setting will change, which is Brightness 70%/Hold tim 10s/Sensitivity 20%/ Daylight threshold disable/Stand-by dimming level 10%/ Stand-by time + ∞)

Test (The button "Test" is for testing purpose after debugging. Pressing this button, the sensor goes to test mode (Hold time is only 3S).)

Press to increase brightness (0-100%)

Press to reduce brightness (100%-0%)

Attention



1. Please read the instructions carefully before using this product and keep it for future reference.
2. The sensor should be installed by a qualified electrician and ensure power is off before the installation.
3. We reserve the right to modify any incorrect text, image and necessary technical parameters.
4. Any unauthorized modification is forbidden, otherwise all guarantees will be immediately invalid.

Installation Precautions

1. Turn the power off at the circuit breaker before installing the sensor.
2. Do not allow bare wires to show.
3. Assemble any necessary mounting accessories.
4. Have the sensor's lens lower than edge of the fixture and keep the sensor away from heating part.

Application Environment

1. Do not mount it outdoors, as it is sensitive to temperature changes.
2. Do not mount in areas with sudden changes in temperature or airflow.
3. Do not have shelves between sensor to the presence area.